

Accessories Catalog



Welcome to the Mindray North America Parts and Accessories Catalog

This catalog will provide you with the parts and accessories that connect to your Mindray Anesthesia Delivery System, Bedside Monitors or Central Station. Each Mindray product is the product of a special brand of patient-focused, clinician-friendly design. For this reason, you can expect the same service, focus and quality with our parts and accessories.

Exceptional service and support

Mindray is a global medical device business with three established segments: Patient Monitoring and Life Support Products, *In-Vitro* Diagnostic Products and Medical Imaging Systems. With more than 6,000 employees and with R&D centers on three continents, Mindray offers the medical community a range of innovative solutions designed to contain costs while ensuring the highest quality of patient care.

Mindray's clinical education specialists provide your staff with comprehensive, on-site training and in-service on demand 24-hours a day, 7-days a week.

Our dedicated field service and in-house technical support organization are one of the largest direct service teams in the industry. Individually and collectively they are committed to enhancing patient care while protecting your investment.

Learn how we can help you maximize your resources with some of the most advanced and affordable devices in the industry. For more information about Mindray products and services, visit www.na.mindray.com.

Finding the Right Part

This catalog has been designed to make finding the right part easy. Chapters are organized by specific product categories. Simply locate the type of part you are looking for under the appropriate category. Not sure which part works with what monitor? No problem. Each accessory is clearly marked for its corresponding medical device.

How to Order

We have made placing orders for parts and accessories easy. You can shop online or contact our customer service department. To shop online 24 hours a day, 7 days a week, log on to: <http://store.na.mindray.com>

Our online store is available only to US customers.

You can also call our customer service department at 1-800-288-2121 (Press 3) Monday – Friday, 8:30am-6:00pm EST.

Buy your accessories from a company you can trust, who offers service you can depend on and the support you expect.

NOTE: This catalog is not an Operating Instructions Manual. This catalog will assist you in identifying the correct parts and accessories to connect to your Mindray anesthesia delivery system, bedside monitor or Central Station. For Operating Instructions, please refer to the Operating Instructions Manual. Warnings, Precautions and Notes can also be found in the Operating Instructions.

Anesthesia Consumables	
Anesthesia Circuit Packages.....	1
Breathing Circuits.....	1
Breathing Bags.....	1
Face Masks.....	2
Filters.....	3
Gas Sampling Lines.....	3
Laryngeal Airway Masks.....	4
Anesthesia	
AGSS.....	5
Battery.....	5
Breathing Systems.....	5
O ₂ Canisters.....	7
Flow Sensor.....	8
Gas Cylinders.....	8
Hoses.....	8
Mounts.....	12
Networking USB Storage.....	14
O ₂ Sensor.....	14
Vaporizers.....	15
Batteries.....	16
Cardiac Output Cables.....	18
CO ₂	19
Communication and Interface Accessories.....	21
Data Storage.....	26
ECG	
Cables.....	27
ESIS Cables.....	28
Neonate Cables.....	29
Cable Adapters.....	30
Electrodes.....	30
Lead Wires – 3 Lead Pinch.....	31
Lead Wires – 3 Lead Snap.....	32
Lead Wires – 5 Lead Pinch.....	33
Lead Wires – 5 Lead Snap.....	34
Lead Wires – 6 Lead.....	36
Lead Wires – 12 Lead.....	36
Single Patient Use Lead Wires.....	37
Invasive Blood Pressure	
IBP Cables.....	38
IBP Transducers.....	40
Miscellaneous Accessories.....	41
Miscellaneous Cables.....	42
Mounts	
Bedrail Mounts.....	47
Mounting Accessories.....	48
Mounting Brackets and Plates.....	49
Remote Display (RD1) Mounts and Displays.....	52
View 12 Mounting Kits.....	52
Wall Mounts.....	53
Non-Invasive Blood Pressure	
Neonate Blood Pressure Cuffs.....	56
NIBP Hoses.....	57
Reusable Blood Pressure Cuffs.....	58
Single Patient Use Blood Pressure Cuffs.....	59
Paper.....	60
Pulse Oximetry	
DPM SpO ₂	62
Masimo SET®.....	65
Nellcor™.....	71
Nonin.....	72
Rolling Stands.....	73
Temperature	
Disposable Mindray Temperature Probes.....	77
Disposable Temperature Probes – 400 Series.....	77
Reusable 400 Series Temperature Probes.....	78
Reusable Mindray Temperature Probes.....	78
Reusable Temperature Cables.....	80
SmarTemp Probes.....	81
Welch Allyn® SureTemp® Plus Thermometer Module and Accessories.....	82

Anesthesia Circuit Packages



Anesthesia Breathing Circuit Package, 22mm 040-001909-00

Breathing Circuit Pkg, 22mm expandable hose, plain parallel wye w/GAS elbow, 3L breathing bag, Adult #5 face mask, B/V filter @ machine end, sampling line

Compatible with A-Series



Anesthesia Breathing Circuit Package, 15mm 040-001911-00

Breathing Circuit Pkg, 15mm expandable hose, plain parallel wye w/GAS elbow, 1L breathing bag, B/V filter @ machine end, sampling line

Compatible with A-Series

Breathing Circuits



Anesthesia Breathing Circuit, 22mm 040-001910-00

Breathing Circuit, 22mm expandable hoses, plain parallel wye w/GAS elbow, 3L breathing bag

Compatible with A-Series



Anesthesia Breathing Circuit, 15mm 040-001912-00

Breathing Circuit, 15mm expandable hoses, plain parallel wye w/GAS elbow, 1L breathing bag

Compatible with A-Series

Breathing Bags



Breathing Bag, 3 Liter Latex Free 040-001921-00

Breathing bag, 3 Liter latex free

Compatible with A-Series



Breathing Bag, 2 Liter Latex Free 040-001922-00

Breathing bag, 2 Liter latex free

Compatible with A-Series

**Breathing Bag, 1 Liter Latex Free**

040-001923-00

Breathing bag, 1 Liter latex free

Compatible with A-Series

**Breathing Bag, 0.5 Liter Latex Free**

040-001924-00

Breathing bag, 0.5 Liter latex free

Compatible with A-Series

Face Masks**Face Mask, Cushioned, Adult #5**

040-001913-00

Face Mask, Cushioned, Adult #5

Compatible with A-Series

**Face Mask, Cushioned, Small Adult/Child #4**

040-001914-00

Face Mask, Cushioned, Small Adult/Child #4

Compatible with A Series

**Face Mask, Cushioned, Toddler #3**

040-001915-00

Face Mask, Cushioned, Toddler #3

Compatible with A-Series

**Face Mask, Cushioned, Infant #2**

040-001916-00

Face Mask, Cushioned, Infant #2

Compatible with A-Series

**Face Mask, Cushioned, Neonate #1**

040-001917-00

Face Mask, Cushioned, Neonate #1

Compatible with A-Series

Filters



Bacterial/Viral (B/V) Filter

040-001918-00

Bacterial/Viral (B/V) Filter

Compatible with A-Series



HMEF

040-001919-00

Heat Moisture Exchange Filter

Compatible with A-Series



HME

040-001920-00

Heat Moisture Exchange

Compatible with A-Series

Gas Sampling Lines



Gas Sampling Line, 10' Male/Male

040-001925-00

Gas sampling line, 10' male/male

Compatible with A-Series

Gas Sampling Line, 10' Male/Female

040-001926-00

Gas sampling line, 10' male/female

Compatible with A-Series

Laryngeal Airway Masks



Laryngeal Airway Mask, Size 1 Curved

040-001927-00

Laryngeal Airway Mask, Size 1 curved

Compatible with A-Series

Laryngeal Airway Mask, Size 1.5 Curved

040-001928-00

Laryngeal Airway Mask, Size 1.5 curved

Compatible with A-Series

Laryngeal Airway Mask, Size 2 Curved

040-001929-00

Laryngeal Airway Mask, Size 2 curved

Compatible with A-Series

Laryngeal Airway Mask, Size 2.5 Curved

040-001930-00

Laryngeal Airway Mask, Size 2.5 curved

Compatible with A-Series

Laryngeal Airway Mask, Size 3 Curved

040-001931-00

Laryngeal Airway Mask, Size 3 curved

Compatible with A-Series

Laryngeal Airway Mask, Size 4 Curved

040-001932-00

Laryngeal Airway Mask, Size 4 curved

Compatible with A-Series

Laryngeal Airway Mask, Size 5 Curved

040-001933-00

Laryngeal Airway Mask, Size 5 curved

Compatible with A-Series

AGSS Accessories



Waste Gas Scavenger Assembly

115-017035-00

Waste Gas Scavenger Assembly

Compatible with A-Series



AGSS Transfer Tube

801-0631-00074-00

AGSS Transfer Tube

Compatible with A-Series



Waste Gas Hose for Gas Module to Quick Release Fitting

801-0631-00078-00

Waste Gas Hose for Gas module to Quick Release Fitting

Compatible with A-Series

Battery



Lithium-ion Battery

115-018012-00

Lithium-ion Battery, 11.1V

Compatible with A-Series

Breathing System



Bellows Dome

801-0631-00054-00

Bellows Dome, A-Series

Compatible with A-Series



Bellows Assembly

0601-30-78968

Bellows Assembly, A-Series

Compatible with A-Series



Insp/Exp Connector

801-0631-00057-00

Insp/Exp Connector, A-Series

Compatible with A-Series



Insp/Exp Connector Rotary Cap

801-0631-00059-00

Insp/Exp Connector Rotary Cap, A-Series

Compatible with A-Series



Water Collection Cup

801-0631-00058-00

Water Collection Cup, A-Series

Compatible with A-Series



Check Valve Dome

801-0631-00061-00

Check valve dome, A-Series

Compatible with A-Series



Check Valve

801-0631-00104-00

Check valve, A-Series

Compatible with A-Series



Bag Arm - Fixed Height

115-017033-00

Bag Arm - Fixed Height, A-Series

Compatible with A-Series



Airway Pressure Gauge

801-0631-00064-00

Airway pressure gauge, A-Series

Compatible with A-Series

O₂ Canisters



CO₂ Absorbent Canister

801-0631-00066-00

CO₂ Absorbent Canister, A-Series

Compatible with A-Series



CO₂ Bypass Assembly

801-0631-00099-00

CO₂ Bypass Assembly, A-Series

Compatible with A-Series



CO₂ Absorber Hose

801-0631-00092-00

CO₂ Absorber Hose, A-Series

Compatible with A-Series



CO₂ Absorber Base with Drain Valve

801-0631-00100-00

CO₂ Absorber Base with Drain Valve, A-Series

Compatible with A-Series



CO₂ Absorbent Canister - Pre-Pak

0683-00-0326-12

CO₂ Absorbent, Pre-Pak (12)

Compatible with A-Series

Flow Sensor



Expiratory Flow Sensor Assembly

801-0631-00056-00

Expiratory Flow Sensor Assembly

Compatible with A-Series



Inspiratory Flow Sensor Assembly

801-0631-00060-00

Inspiratory Flow Sensor Assembly

Compatible with A-Series

Gas Cylinders



Washer, Seal for Cylinder

0348-00-0185

Washer, Seal for Cylinder

Compatible with A-Series



Gas Cylinder Wrench

801-0631-00079-00

Gas Cylinder Wrench

Compatible with A-Series

Hoses



Air Hose - Chemetron

0004-00-0079-12

Air Gas Supply Hose 15' Chemetron

Compatible with A-Series



Air Hose - DISS Female

0004-00-0079-14

Air Gas Supply Hose 15' Diss Female

Compatible with A-Series



Air Hose - Ohmeda

0004-00-0079-11

Air Gas Supply Hose 15' Ohmeda

Compatible with A-Series



Air Hose - Puritan Bennett

0004-00-0079-13

Air Gas Supply Hose 15' Puritan Bennett

Compatible with A-Series



EVAC Hose - Chemetron

0004-00-0081-12

EVAC Gas Supply Hose 15' Chemetron

Compatible with A-Series



EVAC Hose - DISS Female

0004-00-0081-14

EVAC Gas Supply Hose 15' Diss Female

Compatible with A-Series



EVAC Hose - Ohmeda

0004-00-0081-11

EVAC Gas Supply Hose 15' Ohmeda

Compatible with A-Series



EVAC Hose - Puritan Bennett

0004-00-0081-13

EVAC Gas Supply Hose 15' Puritan Bennett

Compatible with A-Series



EVAC/VAC Hose - Chemetron

0004-00-0081-32

EVAC DISS to VAC Gas Supply Hose 15' Chemetron

Compatible with A-Series

**EVAC/VAC Hose - DISS Female**

0004-00-0081-34

EVAC DISS to VAC Gas Supply Hose 15' Diss Female

Compatible with A-Series

**EVAC/VAC Hose - Ohmeda**

0004-00-0081-31

EVAC DISS to VAC Gas Supply Hose 15' Ohmeda

Compatible with A-Series

**EVAC/VAC Hose - Puritan Bennett**

0004-00-0081-33

EVAC DISS to VAC Gas Supply Hose 15' Puritan Bennett

Compatible with A-Series

**N₂O Hose - Chemetron**

0004-00-0078-12

N₂O Gas Supply Hose 15' Chemetron

Compatible with A-Series

**N₂O Hose - DISS Female**

0004-00-0078-14

N₂O Gas Supply Hose 15' Diss Female

Compatible with A-Series

**N₂O Hose - Ohmeda**

0004-00-0078-11

N₂O Gas Supply Hose 15' Ohmeda

Compatible with A-Series

**N₂O Hose - Puritan Bennett**

0004-00-0078-13

N₂O Gas Supply Hose 15' Puritan Bennett

Compatible with A-Series



O₂ Hose - Chemetron

0004-00-0077-12

O₂ Gas Supply Hose 15' Chemetron

Compatible with A-Series



O₂ Hose - DISS Female

0004-00-0077-14

O₂ Gas Supply Hose 15' Diss Female

Compatible with A-Series



O₂ Hose - Ohmeda

0004-00-0077-11

O₂ Gas Supply Hose 15' Ohmeda

Compatible with A-Series



O₂ Hose - Puritan Bennett

0004-00-0077-13

O₂ Gas Supply Hose 15' Puritan Bennett

Compatible with A-Series



VAC Hose - Chemetron

0004-00-0080-14

VAC Gas Supply Hose 15' Chemetron

Compatible with A-Series



VAC Hose - DISS Female

0004-00-0080-16

VAC Gas Supply Hose 15' Diss Female

Compatible with A-Series



VAC Hose - Ohmeda

0004-00-0080-13

VAC Gas Supply Hose 15' Ohmeda

Compatible with A-Series

**VAC Hose - Puritan Bennett**

0004-00-0080-15

VAC Gas Supply Hose 15' Puritan Bennett

Compatible with A-Series

Mounts**Cable Hooks**

0436-00-0206

GCX Cable Hook (mounts under Arm)

Compatible with DPM 6, DPM 7, when mounted to A-Series anesthesia machines

**DPM 5 Mounting Plate**

115-003477-00

DPM5 Adapter Plate mounts the DPM 5 to the A-Series anesthesia machine

Compatible with A-Series, DPM 5

**DPM 6/7 A5 Mounting Adapter**

050-000702-00

Mounting adapter with integral cable hooks mounts the DPM 6/7 to the GCX Arm for mounting to the A-Series Anesthesia machine

Compatible with A-Series, DPM 6, DPM 7

**DPM 6/7 SMR to A-Series Mounting Kit**

115-009637-00

Six inch pole, adapter and clamp mounts the Satellite Module Rack to the GCX arm under the DPM 6/7

Compatible with A-Series

**Monitor Mounting Arm, Pivot, 12"**

0436-00-0169

Monitor Mounting Arm, Pivot, 12"; used with compatible mounting plate to mount the DPM 6 to the A-Series

Compatible with A-Series, DPM 6

**Monitor Mounting Arm, Pivot, 16"**

0436-00-0198

Monitor Mounting Arm, Pivot, 16" ; used with compatible mounting plate to mount the DPM 7 to the A-Series

Compatible with A-Series, DPM 7



Mounting Kit, GM3 to GCX Mount Adapter Plate

0386-00-0344

Mounts the Gas Module 3 to the GCX mounting plate

Compatible with A-Series



Mount, Suction Canister

0436-00-0259

Mount, Suction Canister

Compatible with A-Series



Mounting Arm, Suction Regulator

0436-00-0207

Mounting Arm, Suction Regulator

Compatible with A-Series



Regulator, Patient Suction

0992-00-0256

Regulator, Patient Suction

Compatible with A-Series



Utility Tray, Dual Pivot, 24"

0436-00-0258

Utility Tray, Dual Pivot, 24"

Compatible with A-Series

Networking and USB Storage**CAT 5 Ethernet Cable, Patch, STP, 6'**

0012-00-1274-01

CAT 5 Ethernet Cable, Patch, STP, 6' (1.83m)

Compatible with A-Series

**CAT 5 Ethernet Cable, Patch, STP, 25'**

0012-00-1274-02

CAT 5 Ethernet Cable, Patch, STP, 25' (7.62m)

Compatible with A-Series

**CAT 5 Ethernet Cable, Crossover, STP, 3'**

0012-00-1392-05

CAT 5 Ethernet Cable, Crossover, STP, 3' (0.91m)

Compatible with A-Series

**CAT 5 Ethernet Cable, Crossover, STP, 6'**

0012-00-1392-06

CAT 5 Ethernet Cable, Crossover, STP, 6' (1.83m)

Compatible with A-Series

**CAT 5 Ethernet Cable, Crossover, STP, 10'**

0012-00-1392-07

CAT 5 Ethernet Cable, Crossover, STP, 10' (3.05m)

Compatible with A-Series

O₂ Sensors**O₂ Sensor**

040-001270-00

O₂ Sensor, A-Series

Compatible with A-Series



O₂ Sensor Cable and Housing

801-0631-00102-00

O₂ Sensor Cable and Housing

Compatible with A-Series



O₂ Sensor Cable

801-0631-00091-00

O₂ Sensor Cable

Compatible with A-Series

Vaporizers



Isoflurane Quick Fill Bottle Adapter

0004-00-0101

Isoflurane Quick Fill Bottle Adapter

Compatible with A-Series



Isoflurane Vaporizer with Quick Fill Adapter

0992-00-0149

Isoflurane Vaporizer with Quick Fill Adapter

Compatible with A-Series



Sevoflurane Quick Fill Bottle Adapter

0004-00-0100

Sevoflurane Quick Fill Bottle Adapter

Compatible with A-Series



Sevoflurane Vaporizer with Quick Fill Adapter

0992-00-0148

Sevoflurane Vaporizer with Quick Fill Adapter

Compatible with A-Series

When the patient monitor is not connected to an electrical power source, you can rely on batteries for all Mindray DS USA monitors. Lithium Ion batteries offer improved performance in terms of battery runtime and recharge time.



DPM 2 Lithium Ion Battery

115-018019-00

Lithium Ion Battery for the DPM 2 pulse oximeter

Compatible with DPM 2



Lithium Ion Battery

115-018012-00

Lithium Ion Battery for the Mindray monitors, 11.1V

Compatible with DPM 6, DPM 7 (requires 2 batteries), Accutorr 3, Accutorr 7, Passport 8, Passport 12



Duo Lithium Ion Battery

0146-00-0079

Lithium Ion Battery for the Duo monitor

Compatible with Duo



Power Charger Stand

0852-30-77517

Power Charger Stand includes one charger stand and one power cord

Compatible with DPM 2



Power Charging Kit

0852-30-77504

Charging kit includes one Li-ion battery, one charger stand, one power cord

Compatible with DPM 2



SLA Battery

0146-00-0043

Sealed Lead Battery, 12.0V

Compatible with Trio, Passport 2, Spectrum, Spectrum OR



T1 Lithium Ion Battery

115-018016-00

Lithium Ion Battery, 7.4V

Compatible with T1

T1 Lithium Ion Battery Charger

115-023299-00

Lithium Ion Battery Charger

Compatible with T1



Telepack Batteries

0146-00-0077-01

Batteries (Alkaline, size AA)

Compatible with Panorama Telepack



Universal Lithium Ion Battery

115-018015-00

Universal Lithium Ion Battery, 11.1V

Compatible with Accutorr Plus, Accutorr V, DPM 3, DPM 4, DPM 5, Trio, Passport 2, Passport V, Spectrum, Spectrum OR



V-Series Battery

115-018013-00

Lithium Ion Battery for V12 and V21 patient monitors

Compatible with V12, V21

Cardiac Output Cables



Becton Dickinson In-line Injectate Adapter

0012-00-1532

Cable, Cardiac Output Becton Dickinson in-line injectate adapter

Compatible with DPM 6, DPM 7, Spectrum, Spectrum OR, Passport 8, Passport 12



Abbott Labs In-line Injectate Adapter

0012-00-1533

Cable, Cardiac Output Abbott Labs in-line injectate adapter

Compatible with DPM 6, DPM 7, Spectrum, Spectrum OR, V-Series, Passport 8, Passport 12



Cardiac Output Y Cable

0012-00-1447-01

Cable, Cardiac Output Y, two Temperature connections

Compatible with Spectrum, Spectrum OR, V12, V21



Cardiac Output Y Cable, 12 Pin

0010-30-42743

Cable, Cardiac Output Y, two Temperature connections

Compatible with DPM 6, DPM 7, Passport 8, Passport 12



Edwards Lifesciences Bath Probe Adapter

0012-00-1519

Cable, Cardiac Output Edwards Lifesciences Bath probe adapter

Compatible with Spectrum, Spectrum OR, V12, V21, Passport 8, Passport 12, DPM 6, DPM 7



Edwards Lifesciences In-line Injectate Adapter

0012-00-1520

Cable, Cardiac Output Edwards Lifesciences in-line injectate adapter

Compatible with Spectrum, Spectrum OR, V12, V21, DPM 6, DPM 7

DPM™ Sidestream CO₂



CO₂ Kit – Adult

6800-30-50618

DPM Sidestream CO₂ Kit, Adult

Compatible with DPM 4, DPM 5, DPM 6, DPM 7, Passport V, Passport 8, Passport 12



CO₂ Kit – Neonate

6800-30-50467

DPM Sidestream CO₂ Kit, Neonate

Compatible with DPM 4, DPM 5, DPM 6, DPM 7, Passport V, Passport 8, Passport 12



Dryline™ Airway Adapter – Elbow

9000-10-07487

Dryline airway adapter, elbow, box of 10

Compatible with DPM 4, DPM 5, DPM 6, DPM 7



Dryline™ Airway Adapter – Straight

9000-10-07486

Dryline airway adapter, straight, box of 10

Compatible with DPM 4, DPM 5, DPM 6, DPM 7, Passport V, Passport 8, Passport 12



Dryline™ Water Trap – Adult/Pediatric

9200-10-10530

Dryline water trap, Adult/Pediatric, box of 10

Compatible with DPM 4, DPM 5, DPM 6, DPM 7, Passport V, Passport 8, Passport 12



Dryline™ Water Trap – Neonate

9200-10-10574

Dryline water trap, Neonatal, box of 10

Compatible with DPM 4, DPM 5, DPM 6, DPM 7, Passport V, Passport 8, Passport 12

**Nasal Cannula – Adult**

M02A-10-25937

CO₂ Nasal sample cannula, Adult with 7' line, box of 25

Compatible with DPM 4, DPM 5, DPM 6, DPM 7, Passport V, Passport 8, Passport 12

**Nasal Cannula – Pediatric**

M02A-10-25938

CO₂ Nasal sample cannula, Pediatric with 7' line, box of 25

Compatible with DPM 4, DPM 5, DPM 6, DPM 7, Passport V, Passport 8, Passport 12

**Nasal Cannula – Infant**

M02B-10-64509

CO₂ Nasal sample cannula, Infant with 7' line, box of 25

Compatible with DPM 4, DPM 5, DPM 6, DPM 7, Passport V, Passport 8, Passport 12

**Nasal Cannula – CO₂/O₂**

0683-00-0452-10

Nasal Cannula, CO₂/O₂, 7' (2.1m), box of 10

Compatible with Passport V, Gas Module 3

**Sampling Line – Adult**

9200-10-10533

Sampling line, Adult, 8.2' (2.5 m), box of 25

Compatible with DPM 4, DPM 5, DPM 6, DPM 7, Passport V, Passport 8, Passport 12

**Sampling Line – Neonate**

9200-10-10555

Sampling line, Neonatal, 8.2' (2.5 m), box of 25

Compatible with DPM 4, DPM 5, DPM 6, DPM 7, Passport V, Passport 8, Passport 12

12 Port Hub



12 Port Hub

0992-00-0085-03

12 Port Hub

Compatible with Passport V

Bar Code Scanner



Accutorr 7 Bar Code Scanner

115-008393-00

1D Bar Code Scanner

Compatible with Accutorr 7

Bar Code Scanner

0000-10-10767

Bar Code Scanner

Compatible with Accutorr V, DPM 3

Base Station Accessories



Base Station mounting kit

0386-00-0259

Base Station mounting kit

Compatible with Passport 2, Spectrum, Spectrum OR



Base Station power supply

0014-00-0070

Base Station power supply

Compatible with Passport 2, Spectrum, Spectrum OR

*Communication Ports
(Comm-Ports)*



Cover Assembly, Docking Station (Comm-Port filter)

0198-00-0037

Cover Assembly, Docking Station (Comm-Port filter)

Compatible with Passport 2, Spectrum, Spectrum OR

Ethernet (CS1) Cables



CAT 5 Ethernet Cable, Crossover, 10'

0012-00-1392-07

CAT 5 Ethernet Cable, Crossover, STP, 10'

Compatible with Passport 2, Spectrum, Spectrum OR



CAT 5 Ethernet Cable, Crossover, 3'

0012-00-1392-05

CAT 5 Ethernet Cable, Crossover, STP, 3' (0.91 m)

Compatible with Passport 2, Spectrum, Spectrum OR



CAT 5 Ethernet Cable, Crossover, 6'

0012-00-1392-06

CAT 5 Ethernet Cable, Crossover, STP, 6' (1.83 m)

Compatible with Passport 2, Spectrum, Spectrum OR



CAT 5 Ethernet Cable, Patch, 1'

0012-00-1274-04

CAT 5 Ethernet Cable, Patch, STP, 1' (0.30 m)

Compatible with Passport 2, Spectrum, Spectrum OR



CAT 5 Ethernet Cable, Patch, 10'

0012-00-1274-07

CAT 5 Ethernet Cable, Patch, STP, 10' (3.05 m)

Compatible with Passport 2, Spectrum, Spectrum OR



CAT 5 Ethernet Cable, Patch, 25' 0012-00-1274-02

CAT 5 Ethernet Cable, Patch, STP, 25' (7.62 m)
 Compatible with Passport 2, Spectrum, Spectrum OR



CAT 5 Ethernet Cable, Patch, 6' 0012-00-1274-01

CAT 5 Ethernet Cable, Patch, STP, 6' (1.83 m)
 Compatible with Passport 2, Spectrum, Spectrum OR

IABP Cables



IABP Interface Cable 6100-20-86360

IABP Interface Cable
 Compatible with Passport V



IABP Interface Cable, V-Series 0012-00-1801-01

IABP Interface Cable
 Compatible with V12, V21

Networked Laser Printer



Laser Printer HP, LaserJet 0992-00-0091-08

Laser Printer, LaserJet M602
 Compatible with Passport 2, Spectrum

Nurse Call (NC1) Cables



Unterminated Nurse Call Cable, 9'

0012-00-1277-02

Unterminated Nurse Call Cable, 9' (2.7 m)

Compatible with Passport 2, Spectrum, Spectrum OR, V12, V21



Nurse Call Cable

009-003116-00

Nurse Call Cable

Compatible with Accutorr 3, Accutorr 7, Passport 8, Passport 12



Nurse Call Cable

8000-21-10361

Nurse Call Cable

Compatible with Accutorr V, DPM4, DPM5, DPM6, DPM7, Passport V

Remote Display (RD1) Cables



Cable, VGA Male to Male, 75'

0012-00-0994-04

Cable, VGA Male to Male, 75'

Compatible with Passport V, Spectrum, Spectrum OR

Serial Port (SP1) Cables



Interface Cable

0012-00-1275-01

Cable, Interface, PC, Serial Port to Serial Port, 10'

Compatible with Passport 2, Passport V, Spectrum, Spectrum OR



Serial Port Cable – (DIAP)

009-003436-00

Cable, Interface, PC, Serial Port to Serial Port

Compatible with Accutorr 7



Serial Port to Gas Module Cable - 1'

0012-00-1276-01

Cable, Serial Port to Gas Module, 1' (30.48 cm)

Compatible with Passport 2, Passport V, Spectrum, Spectrum OR

Data Storage Cards



CF Storage Card

9201-30-35952

CF Storage Card

Compatible with DPM 5

CF storage card (4GB)

023-000229-00

CF storage card (4GB)

Compatible with DPM 6, DPM 7

Software Options



Data Output Software Package

0852-30-77491

Data Output Software Package includes: 1 Record Managing Software CD
1 PC communication cable

Compatible with DPM 2

Data Output Software Package

6006-30-39515

Data Output Software Package

Compatible with DPM 3



Data Output Software Package

7000-30-24590

Data Output Software Package

Compatible with DPM 4, DPM 5



Data Output Software Package

6800-30-51213

Data Output Software Package

Compatible with DPM 6, DPM 7, T1

Cables



3/5 Lead ECG Cable, 6 pin 0010-30-42782

ECG Cable: 3/5 Lead, Adult/Pediatric, 6 Pin, Defib-Proof, AHA/IEC, 10'

Compatible with DPM 4, DPM 5



3/5 Lead ECG Cable, 12 pin 0010-30-42719

ECG Cable: 3/5 Lead, Adult/Pediatric, 12 Pin, Defib-Proof, AHA/IEC, 10'

Compatible with DPM 6, DPM 7, Passport 8, Passport 12, T1



3/5 Lead ECG Cable, 10' 0012-00-1745-01

ECG Cable: 3/5 Lead, 10' (3.1 m), reusable

Compatible with Passport V, V12, V21



3/5 Lead ECG Cable, 20' 0012-00-1745-02

ECG Cable: 3/5 Lead, 20' (6.1 m), reusable

Compatible with Passport V, V12, V21



3/5 Lead ECG Cable, 10' 0012-00-1255-01

ECG Cable, 3/5 Lead, 10' (3.1 m), reusable

Compatible with Trio, Passport 2, Spectrum, Spectrum OR



6 Lead ECG Cable, 10' 0012-00-1746-01

ECG Cable 6 Lead, 10'

Compatible with V12, V21



6 Lead ECG Cable, 20' 0012-00-1746-02

ECG Cable, 6 Lead, 20'

Compatible with V12, V21

**Mobility ECG Cable, 10'**

0012-00-1502-01

Mobility ECG Cable, 10', AAMI

Compatible with Passport 2, Spectrum, Spectrum OR

**Mobility ECG Cable, 20'**

0012-00-1502-02

Mobility ECG Cable, 20', AAMI

Compatible with Passport 2, Spectrum, Spectrum OR

3/5 Lead ECG Mobility Cable, 12 pin

040-001416-00

ECG Cable, Adult/Pediatric, connects to the mobility lead wires (0012-00-1514-xx, 0012-00-1503-xx) and to single patient use lead wires (040-000746-01, 040-000748-01)

Compatible with DPM 6, DPM 7, Passport 8, Passport 12, T1

12 Lead ECG Cable

0010-30-42721

ECG Cable, 12 Lead, Adult, defib proof, AHA

Compatible with DPM 6, DPM 7

ESIS Cables**3/5 Lead ESIS ECG Cable, 12 pin**

0010-30-42723

ECG Cable: 3/5 Lead, Adult/Pediatric, 12 Pin, ESU-Proof, AHA/IEC, 10'

Compatible with DPM 6, DPM 7, Passport 8, Passport 12, T1

**3/5 Lead ECG Mobility Cable, ESIS, 12 pin**

009-003652-00

ECG cable connects to the mobility lead wires (0012-00-1514-xx, 0012-00-1503-xx) and to the Mindray single patient use lead wires (040-000746-01, 040-000748-01)

Compatible with DPM 6, DPM 7, Passport 8, Passport 12, T1

**3/5 Lead ESIS ECG Cable, 10'**

0012-00-1745-03

ECG Cable, 3/5 Lead, ESIS, 10' (3.1 m), Reusable

Compatible with Passport V, V12, V21



3/5 Lead ESIS ECG Cable, 20' 0012-00-1745-04

ECG Cable, 3/5 Lead, ESIS, 20' (3.1 m), Reusable

Compatible with Passport V, V12, V21



3/5 Lead ESIS ECG Cable - 10' 0012-00-1255-05

ECG Cable, 3/5 Lead, Straight, ESIS 10' (3.1 m)

Compatible with Passport 2, Spectrum, Spectrum OR



6 Lead ECG ESIS Cable, 10' 0012-00-1746-03

ECG Cable 6 Lead, 10', ESIS

Compatible with V12, V21



Mobility ESIS ECG Cable, 10' 0012-00-1502-03

Mobility ECG Cable, ESIS, 10', AAMI

Compatible with Passport 2, Spectrum, Spectrum OR



Mobility ESIS ECG Cable, 20' 0012-00-1502-04

Mobility ECG Cable, ESIS, 20', AAMI

Compatible with Passport 2, Spectrum, Spectrum OR

Neonate Cables



Neonate ECG Cable 040-000072-00

ECG Cable, Neonatal, 3 Lead, 20' (6.1 m), Reusable

Compatible with Passport V, V12, V21



Neonate ECG Cable 0012-00-1265-01

ECG Cable, Neonatal, 3 Lead, 10' (3.1 m), AAMI, reusable

Compatible with Passport 2, Spectrum, Spectrum OR



Neonate ECG Cable, 6 pin

0010-30-12377

ECG Cable: 3 Lead, Neonatal, 6 Pin, Defib-Proof, PTU, reusable, 10'

Compatible with DPM 4, DPM 5



Neonate ECG Cable - 12 pin

0010-30-42720

ECG Cable: 3 Lead, Pediatric/Neonatal, 12 Pin, Defib-Proof, reusable, 10'

Compatible with DPM 6, DPM 7, Passport 8, Passport 12, T1



Neonate ECG Cable - 12 pin

040-000754-00

3 Lead ECG trunk cable for use with prewired neonate electrodes, 12 Pin, Defib-Proof, AHA

Compatible with DPM 6, DPM 7, Passport 8, Passport 12, T1



Neonate/Pediatric ESIS ECG Cable - 12 pin

0010-30-42724

ECG Cable: 3 Lead, Pediatric/Neonatal, 12 Pin, ESU-Proof, reusable, 10'

Compatible with DPM 6, DPM 7, Passport 8, Passport 12, T1

Cable Adapter

ECG Cable Adapter - 12 pin to 6 pin

0010-30-43054

ECG Cable Adapter, 12 pin to 6 pin. Allows the use of DPM 4 and DPM 5 ECG cables with the DPM 6 and DPM 7 monitors

Compatible with DPM 6, DPM 7

Electrodes

ECG Adult Electrodes

0010-10-12304

ECG Electrodes: Adult, 10 pcs/pack, Kendall

Compatible with DPM 4, DPM 5, DPM 6, DPM 7, DPM CS, V12, V21, Passport 8, Passport 12, T1



ECG Radio Opaque Neonate Electrodes 0681-00-0098-01

Radio Opaque, Neonatal Pre-wired, 3 Lead ECG Electrodes, AAMI, 18" (45.7cm)
(Box of 100 packs; each pack contains 3 electrodes)

Compatible with DPM 6, DPM 7, Passport 2, Passport V, Spectrum, Spectrum OR, V12, V21, Passport 8, Passport 12



ECG Translucent Neonate Electrodes 0681-00-0098-02

Radio Translucent, Neonatal Pre-wired, 3 Lead ECG Electrodes, AAMI, 18" (45.7 cm) Box of 100 Packs (each pack contains 3 electrodes)

Compatible with DPM 6, DPM 7, Passport 2, Passport V, Spectrum, Spectrum OR, V12, V21, Passport 8, Passport 12



Pre-gelled Hydrogel ECG Electrodes 0681-00-0100-01

Disposable pre-gelled ECG Electrodes, foam base and Hydrogel conductive adhesive. (1 case of 600 containing 10 boxes of 60)

Compatible with Trio, Panorama, Passport 2, Passport V, Spectrum, Spectrum OR, V12, V21

Lead Wires – 3 Lead Pinch



3 Lead ECG Pinch Clip Lead Wires - Adult /Pediatric 0010-30-42726

3 Lead ECG wires, Clip, Adult/Pediatric, TPU, AHA, 24"

Compatible with DPM 4, DPM 5, DPM 6, DPM 7, Passport 8, Passport 12, T1



3 Lead ECG Pinch Clip Lead Wires - Adult /Pediatric 0010-30-42731

3 Lead ECG wires, Clip, Adult/Pediatric, AHA, 36"

Compatible with DPM 4, DPM 5, DPM 6, DPM 7, Passport 8, Passport 12, T1



3 Lead ECG Pinch Clip Lead Wires - Neonate 0010-30-42896

3 Lead ECG wires, Clip, Neonatal/Infant, 36"

Compatible with DPM 4, DPM 5, DPM 6, DPM 7, Passport 8, Passport 12, T1



3 Lead Mobility ECG Pinch Clip Lead Wires - 24" 0012-00-1514-05

ECG Mobility Lead Wires, 3 Lead, Pinch, 24" (61.0 cm) Reusable, AAMI

Compatible with Panorama Telepack, Passport 2, Passport V, Spectrum, Spectrum OR, V12, V21, Passport 8, Passport 12, T1


3 Lead Mobility ECG Pinch Clip Lead Wires - 36"

0012-00-1514-06

ECG Mobility Lead Wires, 3 Lead, Pinch, 36" (101.6 cm) Reusable, AAMI

Compatible with Panorama Telepack, Passport 2, Passport V, Spectrum, Spectrum OR, V12, V21, Passport 8, Passport 12, T1


3 Lead ECG Pinch Clip Lead Wires - 24"

0012-00-1262-08

Lead Wires, 3 Lead, Pinch Clip 24" (61.0 cm), AAMI

Compatible with Trio, Passport 2, Spectrum, Spectrum OR


3 Lead ECG Pinch Clip Lead Wires - 40"

0012-00-1262-09

Lead Wires, 3 Lead, Pinch Clip 40" (101.6 cm), AAMI

Compatible with Trio, Passport 2, Spectrum, Spectrum OR

3 Lead ECG Pinch Clip Lead Wires

115-004871-00

Lead Wires, 3 Lead, Pinch Clip

Compatible with Tel-200

Lead Wires – 3 Lead Snap

3 Lead ECG Snap Lead Wires - Adult/Pediatric

0010-30-42734

3 Lead ECG Wires, Snap, Adult/Pediatric, 36"

Compatible with DPM 4, DPM 5, DPM 6, DPM 7, Passport 8, Passport 12, T1


3 Lead Mobility ECG Snap Lead Wires - 24"

0012-00-1503-05

ECG Mobility Lead Wires, 3 Lead, Snap, 24" (61.0 cm), Reusable, AAMI

Compatible with DPM 6, DPM 7, Panorama Telepack, Passport 2, Passport V, Spectrum, Spectrum OR, V12, V21, Passport 8, Passport 12, T1


3 Lead Mobility ECG Snap Lead Wires - 36"

0012-00-1503-06

ECG Mobility Lead Wires, 3 Lead, Snap, 36" (101.6 cm), Reusable, AAMI

Compatible with DPM 6, DPM 7, Panorama Telepack, Passport 2, Passport V, Spectrum, Spectrum OR, V12, V21, Passport 8, Passport 12, T1



3 Lead ECG Snap Lead Wires - 18" 0012-00-1261-07

Lead Wires, 3 Lead, Snap 18" (45.7 cm), AAMI
Compatible with Trio, Passport 2, Spectrum, Spectrum OR



3 Lead ECG Snap Lead Wires - 24" 0012-00-1261-08

Lead Wires, 3 Lead, Snap 24" (61.0 cm), AAMI
Compatible with Trio, Passport 2, Spectrum, Spectrum OR



3 Lead ECG Snap Lead Wires - 40" 0012-00-1261-09

Lead Wires, 3 Lead, Snap 40" (101.6 cm), AAMI
Compatible with Trio, Passport 2, Spectrum, Spectrum OR

3 Lead ECG Snap Lead Wires 115-004867-00

Lead Wires, 3 Lead, Snap
Compatible with Tel-200

Lead Wires – 5 Lead Pinch



5 Lead ECG Pinch Lead Wires - Adult/Pediatric 0010-30-42727

5 Lead ECG Wires, Clip, Adult/Pediatric, 36"
Compatible with DPM 4, DPM 5, DPM 6, DPM 7, Passport 8, Passport 12, T1



5 Lead ECG Pinch Lead Wires - Adult/Pediatric 0010-30-42729

5 Lead ECG Wires, Clip, Adult/Pediatric, 36"
Compatible with DPM 4, DPM 5, DPM 6, DPM 7, Passport 8, Passport 12, T1



5 Lead Mobility ECG Pinch Lead Wires - 24" 0012-00-1514-02

ECG Mobility Lead Wires, 5 Lead, Pinch, 24" (61.0 cm) Reusable, AAMI
Compatible with DPM 6, DPM 7, Panorama, Passport 2, Passport V, Spectrum, Spectrum OR, V12, V21, Passport 8, Passport 12, T1

**5 Lead Mobility ECG Pinch Lead Wires - 36"**

0012-00-1514-03

ECG Mobility Lead Wires, 5 Lead, Pinch, 36" (101.6 cm) Reusable, AAMI

Compatible with DPM 6, DPM 7, Panorama, Passport 2, Passport V, Spectrum, Spectrum OR, V12, V21, Passport 8, Passport 12, T1

**5 Lead ECG Pinch Lead Wires - 18"**

0012-00-1262-01

Lead Wires, 5 Lead, Pinch Clip 18" (45.7 cm), AAMI

Compatible with Trio, Passport 2, Spectrum, Spectrum OR

**5 Lead ECG Pinch Lead Wires - 24"**

0012-00-1262-02

Lead Wires, 5 Lead, Pinch Clip 24" (61.0 cm), AAMI

Compatible with Trio, Passport 2, Spectrum, Spectrum OR

**5 Lead ECG Pinch Lead Wires - 40"**

0012-00-1262-03

Lead Wires, 5 Lead, Pinch Clip 40" (101.6 cm), AAMI

Compatible with Trio, Passport 2, Spectrum, Spectrum OR

5 Lead ECG Pinch Lead Wires

115-004873-00

Lead Wires, 5 Lead, Pinch

Compatible with Tel-200

Lead Wires – 5 Lead Snap**5 Lead ECG Snap Lead Wires - Adult/Pediatric**

0010-30-42735

5-Lead ECG Wires, Snap, Adult

Compatible with DPM 4, DPM 5, DPM 6, DPM 7, Passport 8, Passport 12, T1

**5 Lead Mobility ECG Snap Lead Wires - 18"**

0012-00-1503-01

ECG Mobility Lead Wires, 5 Lead, Snap, 18" (45.7 cm), Reusable, AAMI

Compatible with DPM 6, DPM 7, Panorama, Passport 2, Passport V, Spectrum, Spectrum OR, V12, V21, Passport 8, Passport 12, T1



5 Lead Mobility ECG Snap Lead Wires - 24" 0012-00-1503-02

ECG Mobility Lead Wires, 5 Lead, Snap 24" (61.0 cm) AAMI
 Compatible with DPM 6, DPM 7, Panorama, Passport 2, Passport V, Spectrum, Spectrum OR, V12, V21, Passport 8, Passport 12, T1



5 Lead Mobility ECG Snap Lead Wires - 36" 0012-00-1503-03

ECG Mobility Lead Wires, 5 lead, Snap, 36" (101.6 cm), Reusable, AAMI
 Compatible with DPM 6, DPM 7, Panorama, Passport 2, Passport V, Spectrum, Spectrum OR, V12, V21, Passport 8, Passport 12, T1



5 Lead ECG Snap Lead Wires - 18" 0012-00-1261-01

Lead Wires, 5 Lead, Snap 18" (45.7 cm), AAMI
 Compatible with Trio, Passport 2, Spectrum, Spectrum OR



5 Lead ECG Snap Lead Wires - 24" 0012-00-1261-02

Lead Wires, 5 Lead, Snap 24" (61.0 cm), AAMI
 Compatible with Trio, Passport 2, Spectrum, Spectrum OR



5 Lead ECG Snap Lead Wires - 40" 0012-00-1261-03

Lead Wires, 5 Lead, Snap 40" (101.6 cm), AAMI
 Compatible with Trio, Passport 2, Spectrum, Spectrum OR



5 Lead ECG Snap Lead Wires - Extended Leg 0012-00-1261-13

Lead Wires, 5 Lead, Snap, Extended Leg, 3/40", 2/60", AAMI
 Compatible with Trio, Passport 2, Spectrum, Spectrum OR

5 Lead ECG Snap Lead Wires 115-004869-00

Lead Wires, 5 Lead, Snap
 Compatible with Tel-200

Lead Wires – 6 Lead**6 Lead ECG Pinch Lead Wires - 36"**

0012-00-1816-03

ECG Lead Wire Set, 6 Lead, Pinch, 36" (91.44 cm), AAMI

Compatible with V12, V21

**6 Lead ECG Snap Lead Wires - 24"**

0012-00-1773-02

ECG Lead Wire Set, 6 Lead, Snap, 24" (61.0 cm), AAMI

Compatible with V12, V21

Lead Wires – 12 Lead**5 Lead ECG Pinch Extended Lead Wires - 24"**

0012-00-1820-02

5 Lead Extended Lead Set Pinch 24", AAMI
(for use with 12 lead cable)"

Compatible with V12, V21

**5 Lead ECG Pinch Extended Lead Wires - 36"**

0012-00-1820-03

5 Lead Extended Lead Set Pinch 36", AAMI
(for use with 12 lead cable)"

Compatible with V12, V21

**5 Lead ECG Snap Extended Lead Wires - 24"**

0012-00-1818-02

5 Lead Extended Lead Set Snap 24", AAMI
(for use with 12 lead cable)"

Compatible with V12, V21

**5 Lead ECG Snap Extended Lead Wires - 36"**

0012-00-1818-03

5 Lead Extended Lead Set Snap 36", AAMI
(for use with 12 lead cable)"

Compatible with V12, V21



12 Lead ECG Lead Wires 0012-00-1411-02

Lead Wire Set for 12 Lead ECG Monitoring, AAMI

Compatible with Passport 2, Spectrum

12 Lead ECG Lead Wires, Chest 0010-30-42908

Lead Wires, Chest, for 12 Lead ECG Monitoring

Compatible with DPM6, DPM7

12 Lead ECG Lead Wires, Limb 0010-30-42906

Lead Wires, Limb, for 12 Lead ECG Monitoring

Compatible with DPM6, DPM7

Single Patient Use Leadwires



5 Lead Disposable ECG Snap Lead Wires 040-000746-01

5 Lead Disposable ECG Snap Lead Wires, Single Patient Use, AAMI, 24", 20/box

Compatible with Panorama Telepack, V12, V21, DPM 6, DPM 7, Passport V, Passport 2, Spectrum, Passport 8, Passport 12, T1



3 Lead Disposable ECG Snap Lead Wires 040-000748-01

3 Lead Disposable ECG Snap Lead Wires, Single Patient Use, AAMI, 24", 20/box

Compatible with Panorama Telepack, V12, V21, DPM 6, DPM 7, Passport V, Passport 2, Spectrum, Passport 8, Passport 12, T1

IBP Cables



Becton Dickinson IBP Cable - 6 Pin

001C-30-70758

6 Pin IBP Cable (for Becton Dickinson)

Compatible with DPM 4, DPM 5



Becton Dickinson IBP Cable - 12 Pin

001C-30-70757

12 Pin IBP Cable (for Becton Dickinson)

Compatible with DPM 6, DPM 7, Passport 8, Passport 12, T1



Becton Dickinson IBP Cable

040-000053-00

IBP Cable, Becton Dickinson P10EZ-1, P23XL-1, DTX/Plus, 12ft

Compatible with Passport V, V12, V21



Double-end IBP Extension Cable

040-001029-00

IBP extended cable with dual-receptacle used to support the double-channel IBP function

Compatible with Passport 8, Passport 12, T1



Edwards IBP Cable - 6 Pin

0010-21-43094

6 Pin IBP Cable for Edwards

Compatible with DPM 4, DPM 5



Edwards IBP Cable - 12 Pin

0010-21-12179

12 Pin IBP Cable for Edwards

Compatible with DPM 6, DPM 7, Passport 8, Passport 12, T1



Edwards IBP Cable

040-000054-00

IBP Cable, Edwards Life Sciences TruWave PX, 12'

Compatible with Passport V, V12, V21



Hospira IBP Cable - 6 Pin

001C-30-70760

6 Pin IBP Cable (for Hospira)

Compatible with DPM 4, DPM 5



Hospira IBP Cable - 12 Pin

001C-30-70759

12 Pin IBP Cable (for Hospira)

Compatible with DPM 6, DPM 7, Passport 8, Passport 12, T1



Hospira IBP Cable

040-000052-00

IBP Cable, Hospira Transpac IV, 12'

Compatible with Passport V, V12, V21



IBP Cable Adapter

0010-20-42795

IBP cable adapter (12 pin to 6 pin)

Compatible with DPM 6, DPM 7, Passport 8, Passport 12, T1



IBP Cable Adapter

040-000096-00

IBP Cable Adapter

Compatible with Passport V, V12, V21



IBP Interface Cable

0012-00-1245

Cable, Interface, Transducer

Compatible with Trio, Passport 2, Spectrum, Spectrum OR



Memscap IBP Cable - 6 Pin

0010-21-43081

6 Pin IBP Cable for Memscap (SP844 transducer)

Compatible with DPM 4, DPM 5



Memscap IBP Cable - 12 Pin

0010-21-43082

12 Pin IBP Cable for Memscap (SP844 transducer)

Compatible with DPM 6, DPM 7, Passport 8, Passport 12

IBP Transducers

Becton Dickinson IBP P23XL-1 Transducer

0682-00-0084

Becton Dickinson P23XL-1 IBP Transducer, Reusable

Compatible with Trio, Passport 2, Spectrum, Spectrum OR

Keyboard



V-Series USB Keyboard

023-000247-00

V-Series USB Keyboard

Compatible with V12, V21, DPM 6, DPM 7

Mouse



V-Series USB Mouse

023-000248-00

V-Series USB Mouse

Compatible with V12, V21, DPM 6, DPM 7

Protective Covers



Protective Cover, Light Blue

0852-21-77412-51

Protective cover for DPM 2 pulse oximeter, light blue

Compatible wit DPM 2

Telemetry Bags



Disposable DPM™ CS Telepack Pouch

0152-10-39878

Disposable Transmitter Bag protects the DPM CS Telepack

Compatible with DPM CS Ambulatory Telepack



Disposable Panorama Telepack Pouch

0202-00-0179-02

Disposable Panorama Telepack Pouch , pkg 25

Compatible with Panorama Telepack

Adapter Cables



Analog Out Interface Cable

0012-00-1801-01

Terminated pigtail cable – IABP sync cable

Compatible with V12, V21



Analog Output Cable

009-003117-00

Analog output cable

Compatible with Passport 8, Passport 12



Unterminated Pigtail Cable for Analog Out

0012-00-1801-02

Unterminated pigtail cable for analog out (outputs 5 signals: IBP1, IBP2, ECG, defib sync & ground)

Compatible with V12, V21



Infrared Transmission Adapter

0000-10-11254

Infrared transmission adapter

Compatible with DPM 2

Communication Cable



PC Communication Cable

0850-20-30725

1 PC communication cable

Compatible with DPM 1, DPM 2

Defib Cables



Defib Interface Cable 6100-20-86361
 Defib Interface Cable
 Compatible with Passport V



Defib Sync Cable 009-000027-00
 Defibrillator synchronization cable
 Compatible with DPM 6, DPM 7

Defib Sync Cable 009-003249-00
 Defibrillator synchronization cable, 12 pin
 Compatible with T1

Docking Station Cables

T1 Docking Station Cable, 1m 009-003591-00
 Cable connects the T1 to the T1 docking station
 Compatible with T1

T1 Docking Station Cable, 4m 009-003592-00
 Cable connects the T1 to the T1 docking station
 Compatible with T1

DPD Defibrillator Cables



DPD Defib Cable, 8" 0012-00-1301-01
 Cable Assembly, DPD Defibrillator, 8' (20.32 cm)
 Compatible with Panorama, Passport 2, Spectrum, Spectrum OR

Ethernet (CS1) Cables**CAT 5 Ethernet Cable, Crossover, 10'**

0012-00-1392-07

CAT 5 Ethernet Cable, Crossover, STP, 10' (3.05 m)

Compatible with Passport 2, Passport V, Spectrum, Spectrum OR, V12, V21

**CAT 5 Ethernet Cable, Crossover, 3'**

0012-00-1392-05

CAT 5 Ethernet Cable, Crossover, STP, 3' (0.91 m)

Compatible with Passport 2, Passport V, Spectrum, Spectrum OR, V12, V21

**CAT 5 Ethernet Cable, Crossover, 6'**

0012-00-1392-06

CAT 5 Ethernet Cable, Crossover, STP, 6' (1.83 m)

Compatible with Passport 2, Passport V, Spectrum, Spectrum OR, V12, V21

**CAT 5 Ethernet Cable, Patch, 25'**

0012-00-1274-02

CAT 5 Ethernet Cable, Patch, STP, 25' (7.62)

Compatible with Passport 2, Passport V, Spectrum, Spectrum OR, V12, V21

**CAT 5 Ethernet Cable, Patch, 6'**

0012-00-1274-01

CAT 5 Ethernet Cable, Patch, STP, 6' (1.83m)

Compatible with Passport 2, Passport V, Spectrum, Spectrum OR, V12, V21

Gas Module Cables



Serial Port to Gas Module Cable, 1'

0012-00-1276-01

Cable, Serial Port to Gas Module, 1' (0.3 m)

Compatible with Passport 2, Passport V, Spectrum, Spectrum OR



Serial Port to Gas Module Cable, 6'

0012-00-1276-02

Cable, Serial Port to Gas Module, 6' (1.8 m)

Compatible with Passport 2, Passport V, Spectrum, Spectrum OR

Grounding Cable



Grounding Cable

1000-21-00122

Grounding Cable

Compatible with DPM 4, DPM 5, DPM 6, DPM 7

IABP Cable



IABP Analog Output

6800-20-50146

IABP Analog Output Cable

Compatible with DPM 6, DPM 7

Nurse Call Cable



Nurse Call Cable

8000-21-10361

Nurse Call Cable

Compatible with Accutorr V, DPM 3, DPM 4, DPM 5, DPM 6, DPM 7, Passport V

Nurse Call Cable

009-003116-00

Nurse Call Cable

Compatible with Accutorr 3, Accutorr 7, Passport 8, Passport 12

Power Cords



AC Power Cord, 110V

0012-25-0001

AC Power Cord, 110V

Compatible with Accutorr V, Passport 2, Passport V, Spectrum, Spectrum OR, V12, V21, Accutorr 3, Accutorr 7

T1 Power Supply

115-020874-00

Power supply with power cord

Compatible with T1

USB Cables



Cable, Mod Bus, Powered USB, 12'

0012-00-1803-13

Cable, mod bus, powered USB, 12'

Compatible with V12, V21



Cable, Mod Bus, Powered USB, 4'

0012-00-1803-15

Cable, mod bus, powered USB, 4'

Compatible with V12, V21



Cable, Mod Bus, Powered USB, 6'

0012-00-1803-12

Cable, mod bus, powered USB, 6'

Compatible with V12, V21



Cable, Mod Bus, Powered USB, 6'

6800-20-50319

Cable, mod bus, powered USB, 6'

Compatible with DPM 6, DPM 7

Bedrail Mounts



Accutorr 7 Bedrail Mount Kit

115-020575-00

Bedrail clamp mounts the Accutorr 7 to the patient's bed

Compatible with Accutorr 7



Bedrail Mount Kit

0040-00-0293

Bedrail Mount Kit mounts monitor to the bedrail of a patient bed

Compatible with Passport 2, Spectrum, Spectrum OR



DPM 2 Bedrail Mount

0852-30-77537

Bedrail clamp mounts the DPM 2 to a patient's bed

Compatible with DPM 2



DPM Bedrail Clamp

8000-30-90170

Bedrail Clamp

Compatible with DPM 3, DPM 4, DPM 5



DPM Bedrail Hook

8000-30-90169

Bedrail Hook mounts the DPM monitors to the patient bed

Compatible with DPM 4, DPM 5



Passport 8 Bedrail Mount

115-012697-00

Bedrail mount mounts the Passport 8 to patient's bed

Compatible with Passport 8



Passport 12 Bedrail Mount

115-012698-00

Bedrail clamp mounts the Passport 12 to patient's bed

Compatible with Passport 12



Miscellaneous Mounts

Passport V Bedrail Mount Kit

6100-30-86358

Bedrail Mount Kit mounts monitor to the bedrail of a patient bed

Compatible with Passport V

Pole Mounting Kit

045-001230-00

Mounting Kit to mount the T1 to a pole

Compatible with T1

T1 Monitor Handle

115-011824-00

Monitor Handle attaches to the T1 Monitor

Compatible with T1

T1 Module Carrying Handle

TCN14-FZ001-F-005

T1 Module Carrying Handle with 1x Module Slot and Bed Hook

Compatible with T1

Mounting Accessories



Cable Hooks

0436-00-0206

GCX Cable Hook (mounts under Arm)

Compatible with DPM 6, DPM 7



VHM Cable Management Clips

034-000108-00

VHM Cable Management Clips used to organize cables with the VHM wall mount

Compatible with V12, V21



Wall Channel Cover

034-000109-00

Wall Channel Cover spare part

Compatible with V12, V21 wall mounts

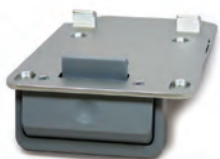
Mounting Brackets & Plates



Accutorr Vital Signs Rolling Stand, Quick Release Mount 045-001054-00

Quick release mounting bracket for use with the Mindray rolling stand

Compatible with Accutorr 3, Accutorr 7



Accutorr Vital Signs Wall Mount, Quick Release Mount 045-001055-00

Quick release mounting bracket for use GCX wall mounts

Compatible with Accutorr 3, Accutorr 7



Accutorr V Genius Temp Bracket Kit 115-007728-00

Genius Temperature Bracket Kit mounts the Genius temperature module to the Accutorr V

Compatible with Accutorr V



Accutorr V Mounting Bracket 6101-30-46669

Mounting bracket used with wall mount or rolling stand

Compatible with Accutorr V



DPM 4 Transition Plate Kit 115-007504-00

DPM 4 Transition Plate Kit mounts the DPM 4 to a DPM wall mount or DPM rolling stand. The plate will also mount the DPM 4 to the GCX 12" M Series wall mount and GCX VHM.

Compatible with DPM 4



DPM 5 Transition Plate Kit 115-003477-00

DPM 5 Transition Plate Kit mounts the DPM 5 to a DPM wall mount or DPM rolling stand. The plate will also mount the DPM 5 to the GCX 12" M Series wall mount and GCX VHM.

Compatible with DPM 5



DPM 6 GCX Wall Mount Plate 0040-00-0452

This mounting plate mounts the DPM 6 to the 12" GCX M-Series wall mount and the GCX VHM.

Compatible with DPM 6



DPM 6 Transition Plate Kit

115-003441-00

Mounts the DPM 6 to the DPM rolling stand or DPM wall mount.

Compatible with DPM 6

DPM 6 Satellite Module Rack GCX Mount with Cable Hooks

0040-00-0451

CABLE HOOKS, Six (6) inch pole, adapter and clamp mounts the Satellite Module Rack to the GCX arm under the DPM6

Compatible with DPM 6 when wall mounted



DPM 6/7 SMR Bracket

0010-30-42867

Satellite module rack wall mount bracket for use with DPM wall mounts and DPM rolling stands

Compatible with DPM 6, DPM 7



Gas Module 3 Mounting Plate

0436-00-0160

Mounts to the Gas Module 3

Compatible with Gas Module 3



Gas Module 3 Mounting Plate

0386-00-0344

Mounting Plate mounts the Gas Module 3 to a rolling stand, wall mount or anesthesia arm

Compatible with Gas Module 3



Module Rack Mounting Cleat

115-005389-00

Module Rack Mounting Cleat

Compatible with V12, V21



Passport V / Gas Module Mounting Kit

0020-00-0202-01

Mounting Kit mounts the Passport V to the Gas Module 3

Compatible with Passport V



Passport V Mounting Kit

115-003234-00

Mounting Plate Kit, Used to mount the Passport V to the Transport Rolling Stand and Wall Mount

Compatible with Passport V



Quick Release Mounting Kit

115-003237-00

Quick Release Mounting Kit used to mount the Passport V to the Transport Rolling stand or Wall Mount

Compatible with Passport V

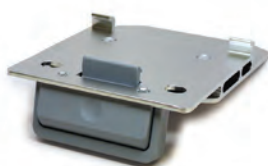


Quick Release Mount for Rolling Stand – Passport 8 and T1

045-000953-00

Quick release mounting bracket mounts the Passport 8 or the T1 to the Mindray Value rolling stand

Compatible with Passport 8, T1

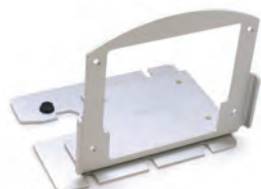


Quick Release Mount for Passport 8 / 12 and T1

045-000954-00

Quick release mounts the Passport 12 to the Transport Rolling stand. This mount also mounts the Passport 8, Passport 12 and T1 to the GCX wall mount.

Compatible with Passport 8, Passport 12, T1



Stationary Mounting Bracket Kit

0040-00-0299-02

Stationary Mounting Bracket Kit mounts monitors to the Transport rolling stand or wall mount

Compatible with Passport 2, Spectrum, Spectrum OR



Telescoping Down Post

045-000295-00

Telescoping Down Post

Compatible with V12, V21



Trio Mounting Bracket

0040-00-0338

Trio Mounting Bracket Kit used to mount the Trio monitor to the Value Rolling stand or wall mount

Compatible with Trio



V Dock Mounting Plate

115-005387-00

V Dock Mounting Plate mounts the V Dock to the V-Series Rolling Stand or Wall Mount

Compatible with V12, V21



V12 Mounting Bracket

115-003088-00

Mounting bracket for Rolling Stand used to mount the V12 to the V-Series rolling stand

Compatible with V12

Remote Display (RD1) Mounts and Displays



Remote Display Wall Mount

0040-00-0368

GCX flush wall mount used to mount remote flat panel displays

Compatible with Panorama, Passport V, Spectrum, Spectrum OR



Wall Mount, VHM

0436-00-0210

Wall Mount VHM, variable height mount

Compatible with Panorama, Passport V, Spectrum, Spectrum OR

View 12 Mounting Kits



Passport 2 View 12 Mounting Kit

0040-00-0311-01

Passport 2 View 12 Mounting Kit

Compatible with Passport 2



Spectrum View 12 Mounting Kit

0040-00-0352

Spectrum View 12 Mounting Kit

Compatible with Spectrum

Wall Mounts



Accutorr V Wall Mount

ACTWALLMT

GCX Wall mount and mounting bracket for the Accutorr V

Compatible with Accutorr V



Accutorr Vital Signs Wall Mount

045-001059-00

M Series wall mount with quick release bracket

Compatible with Accutorr 3, Accutorr 7



Accutorr Vital Signs 6" Wall Mount

115-025386-00

6" M Series wall mount with quick release bracket. Ideal for small rooms where space is limited.

Compatible with Accutorr 3, Accutorr 7



DPM 3 Wall Mount

045-000949-00

Wall Mount for DPM 3 includes wall mount and mounting bracket

Compatible with DPM 3



DPM 4 Wall Mount

045-000942-00

Wall Mount for DPM 4 includes wall mount and mounting bracket

Compatible with DPM 4



DPM 5 Wall Mount

045-000947-00

Wall Mount for DPM 5 includes wall mount and mounting bracket

Compatible with DPM 5

**DPM 6 Wall Mount**

045-000926-00

Wall Mount for DPM 6 includes wall mount and mounting bracket

Compatible with DPM 6

**DPM 7 Wall Mount**

045-000929-00

Wall Mount for DPM 7 includes wall mount and mounting bracket

Compatible with DPM 7

**DPM 6/7 External Display Wall Mount**

0010-30-42956

External display wall mount DPM6/7

Compatible with DPM 6, DPM 7

**Passport 8 / Passport 12 / T1 Wall Mount**

045-000931-00

M Series wall mount with quick release bracket

Compatible with Passport 8, Passport 12, T1

**Passport 8 / Passport 12 VHM Wall Mount**

121-001141-00

Variable Height Wall Mount with quick release bracket

Compatible with Passport 8, Passport 12

**Passport V VHM Wall Mount**

PASSVHMMT

VHM Wall Mount with mounting plate

Compatible with Passport V

**Passport V VHM Wall Mount with Quick Release**

PASSVHMMTQR

VHM Wall Mount with Quick Release Mount

Compatible with Passport V

Passport V Wall Mount with Quick Release

PASSVWALLMTQR

GCX Wall Mount with Quick Release Mount

Compatible with Passport V



Passport V Wall Mount

PASSVWALLMT

Wall Mount with Mounting Plate

Compatible with Passport V



V-Series VHM Wall Mount

115-006911-00

V-Series VHM (Variable Height) Wall Mount Assembly

Compatible with V12, V21



VHM Wall Mount

0436-00-0209

Variable height mount, does not include monitor mounting plates

Compatible with DPM 4, DPM 5, DPM 6, Passport 2, Passport V, Spectrum, Spectrum OR



V-Series Module Rack Wall Mount Assembly

115-006912-00

V-Series Module Rack Wall Mount Assembly

Compatible with V12, V21



Wall Mount - 12"

0436-00-0169

GCX Wall Mount, 12" used to mount Mindray™ monitors to wall mount. Does not include monitor wall mount brackets or plates.

Compatible with Accutorr V, DPM 4, DPM 5, DPM 6, Passport 2, Passport V, Spectrum, Spectrum OR, Trio



Mindray™ North America's line of reusable and single patient use disposable blood pressure cuffs are the ideal choice for your noninvasive blood pressure supplies needs. Our cuffs are cost effective yet retain the most important qualities – comfort and accuracy for your patients. Color coded by size for instant identification, reusable and single patient use cuffs are latex free and conform to the standards set by the AHA.

Neonate Blood Pressure Cuffs



Single Patient Use CM1500A Neonatal Blood Pressure Cuff 001B-30-70692

CM1500A neonate cuff, single-patient use, limb circumference 3.1 to 5.7cm, box of 20

Compatible with DPM 3, DPM 4, DPM 5, DPM 6, DPM 7, Accutorr 3, Accutorr7, Passport 8, Passport 12, T1



Single Patient Use CM1500B Neonatal Blood Pressure Cuff 001B-30-70693

CM1500B neonate cuff, single-patient use, limb circumference 4.3 to 8.0cm, box of 20

Compatible with DPM 3, DPM 4, DPM 5, DPM 6, DPM 7, Accutorr 3, Accutorr7, Passport 8, Passport 12, T1



Single Patient Use CM1500C Neonatal Blood Pressure Cuff 001B-30-70694

CM1500C neonate cuff, single-patient use cuff, limb circumference 5.8 to 10.9cm, box of 20

Compatible with DPM 3, DPM 4, DPM 5, DPM 6, DPM 7, Accutorr 3, Accutorr7, Passport 8, Passport 12, T1



Single Patient Use CM1500D Neonatal Blood Pressure Cuff 001B-30-70695

CM1500D neonate cuff, single-patient use cuff, limb circumference 7.1 to 13.1cm, box of 20

Compatible with DPM 3, DPM 4, DPM 5, DPM 6, DPM 7, Accutorr 3, Accutorr7, Passport 8, Passport 12, T1



Single Patient Use Neonatal Size 1 Blood Pressure Cuff 0683-23-0001

Neonatal Size 1, single patient use, limb circumference: 3 to 6cm, box of 10

Compatible with Accutorr V, Passport 2, Passport V, Spectrum, Spectrum OR, V12, V21



Single Patient Use Neonatal Size 2 Blood Pressure Cuff 0683-23-0002

Neonatal Size 2, single patient use, limb circumference: 5 to 8cm, box of 10

Compatible with Accutorr V, Passport 2, Passport V, Spectrum, Spectrum OR, V12, V21



Single Patient Use Neonatal Size 3 Blood Pressure Cuff 0683-23-0003

Neonatal Size 3, single patient use, limb circumference: 7 to 10cm, box of 10

Compatible with Accutorr V, Passport 2, Passport V, Spectrum, Spectrum OR, V12, V21



Single Patient Use Neonatal Size 4 Blood Pressure Cuff 0683-23-0004

Neonatal Size 4, single patient use, limb circumference: 9 to 13cm, box of 10

Compatible with Accutorr V, Passport 2, Passport V, Spectrum, Spectrum OR, V12, V21



Single Patient Use Neonatal Size 5 Blood Pressure Cuff 0683-23-0005

Neonatal Size 5, single patient use, limb circumference: 12 to 17cm, box of 10

Compatible with Accutorr V, Passport 2, Passport V, Spectrum, Spectrum OR, V12, V21

NIBP Hoses



NIBP Hose 6200-30-09688

NIBP tubing, Adult/Pediatric/Infant

Compatible with DPM 6, DPM 7, Accutorr 3, Accutorr 7, Passport 8, Passport 12, T1



NIBP Hose 509B-30-06259

NIBP tubing, Adult/Pediatric/Infant

Compatible with DPM 3, DPM 4, DPM 5



NIBP Hose - Neonate 509B-30-06260

NIBP tubing, Neonatal, 3 m

Compatible with DPM 3, DPM 4, DPM 5



NIBP Hose - Neonate 6200-30-11560

NIBP tubing, Neonatal, with connectors (3 m)

Compatible with DPM 6, DPM 7, Accutorr 3, Accutorr7, Passport 8, Passport 12, T1



NIBP Hose, 5' 0683-04-0003

NIBP Hose, 5' (1.5 m), Quick Connect to Quick Connect

Compatible with Accutorr V, Duo, Trio, Passport 2, Passport V, Spectrum, Spectrum OR, V12, V21



NIBP Hose, 10' 0683-04-0004

NIBP Hose, 10' (3.5 m) Quick Connect to Quick Connect

Compatible with Accutorr V, Duo, Trio, Passport 2, Passport V, Spectrum, Spectrum OR, V12, V21

Reusable Blood Pressure Cuffs



Reusable Cuff Starter Kit 0020-00-0184-01

Reusable NIBP Cuff Kit: Includes one Child, Small Adult, Adult, Large Adult, and Thigh cuff

Compatible with Accutorr V, DPM 3, DPM 4, DPM 5, DPM 6, DPM 7, Duo, Trio, Passport 2, Passport V, Spectrum, Spectrum OR, V12, V21, Accutorr 3, Accutorr 7, Passport 8, Passport 12, T1



Child Reusable Blood Pressure Cuff 0683-15-0001-01

Reusable NIBP cuff, Child, limb circumference: 10 to 19cm, quick connect

Compatible with Accutorr V, DPM 3, DPM 4, DPM 5, DPM 6, DPM 7, Duo, Trio, Passport 2, Passport V, Spectrum, Spectrum OR, V12, V21, Accutorr 3, Accutorr7, Passport 8, Passport 12, T1



Small Adult Reusable Blood Pressure Cuff 0683-15-0002-01

Reusable NIBP cuff, Small Adult, limb circumference: 18 to 26cm, quick connect

Compatible with Accutorr V, DPM 3, DPM 4, DPM 5, DPM 6, DPM 7, Duo, Trio, Passport 2, Passport V, Spectrum, Spectrum OR, V12, V21, Accutorr 3, Accutorr7, Passport 8, Passport 12, T1



Adult Reusable Blood Pressure Cuff 0683-15-0003-01

Reusable NIBP cuff, Adult, limb circumference: 25 to 35cm, quick connect

Compatible with Accutorr V, DPM 3, DPM 4, DPM 5, DPM 6, DPM 7, Duo, Trio, Passport 2, Passport V, Spectrum, Spectrum OR, V12, V21, Accutorr 3, Accutorr7, Passport 8, Passport 12, T1



Adult Long Reusable Blood Pressure Cuff 0683-15-0006-01

Reusable NIBP Cuff, Adult Long, limb circumference: 25 to 35cm, quick connect

Compatible with Accutorr V, DPM 3, DPM 4, DPM 5, DPM 6, DPM 7, Duo, Trio, Passport 2, Passport V, Spectrum, Spectrum OR, V12, V21, Accutorr 3, Accutorr 7, Passport 8, Passport 12, T1



Large Adult Reusable Blood Pressure Cuff

0683-15-0004-01

Reusable NIBP cuff, Large Adult, limb circumference: 33 to 47cm, quick connect

Compatible with Accutorr V, DPM 3, DPM 4, DPM 5, DPM 6, DPM 7, Duo, Trio, Passport 2, Passport V, Spectrum, Spectrum OR, V12, V21, Accutorr 3, Accutorr 7, Passport 8, Passport 12, T1



Large Adult Long Reusable Blood Pressure Cuff

0683-15-0007-01

Reusable NIBP Cuff, Large Adult Long, limb circumference: 33 to 47cm, quick connect

Compatible with Accutorr V, DPM 3, DPM 4, DPM 5, DPM 6, DPM 7, Duo, Trio, Passport 2, Passport V, Spectrum, Spectrum OR, V12, V21, Accutorr 3, Accutorr 7, Passport 8, Passport 12, T1



Thigh Reusable Blood Pressure Cuff

0683-15-0005-01

Reusable NIBP cuff, Thigh, limb circumference: 46 to 66cm, quick connect

Compatible with Accutorr V, DPM 3, DPM 4, DPM 5, DPM 6, DPM 7, Duo, Trio, Passport 2, Passport V, Spectrum, Spectrum OR, V12, V21, Accutorr 3, Accutorr 7, Passport 8, Passport 12, T1

Single Patient Use Blood Pressure Cuffs



Child Single Patient Use Blood Pressure Cuff

0683-14-0001-01

Disposable NIBP cuff, Child, limb circumference: 10 to 19cm, quick connect, box of 10

Compatible with Accutorr V, DPM 3, DPM 4, DPM 5, DPM 6, DPM 7, Duo, Trio, Passport 2, Passport V, Spectrum, Spectrum OR, V12, V21, Accutorr 3, Accutorr 7, Passport 8, Passport 12, T1



Small Adult Single Patient Use Blood Pressure Cuff

0683-14-0002-01

Disposable NIBP cuff, Small Adult, 18 to 26cm, quick connect, box of 10

Compatible with Accutorr V, DPM 3, DPM 4, DPM 5, DPM 6, DPM 7, Duo, Trio, Passport 2, Passport V, Spectrum, Spectrum OR, V12, V21, Accutorr 3, Accutorr 7, Passport 8, Passport 12, T1



Adult Single Patient Use Blood Pressure Cuff

0683-14-0003-01

Disposable NIBP cuff, Adult, limb circumference: 25 to 35cm, quick connect, box of 10

Compatible with Accutorr V, DPM 3, DPM 4, DPM 5, DPM 6, DPM 7, Duo, Trio, Passport 2, Passport V, Spectrum, Spectrum OR, V12, V21, Accutorr 3, Accutorr 7, Passport 8, Passport 12, T1



Adult Long Single Patient Use Blood Pressure Cuff

0683-14-0006-01

Disposable NIBP Cuff, Large Adult Long, limb circumference: 25 to 35cm, quick connect, box of 10

Compatible with Accutorr V, DPM 3, DPM 4, DPM 5, DPM 6, DPM 7, Duo, Trio, Passport 2, Passport V, Spectrum, Spectrum OR, V12, V21, Accutorr 3, Accutorr 7, Passport 8, Passport 12, T1



Large Adult Single Patient Use Blood Pressure Cuff

0683-14-0004-01

Disposable NIBP cuff, Large Adult, limb circumference: 33 to 47cm, quick connect, box of 10

Compatible with Accutorr V, DPM 3, DPM 4, DPM 5, DPM 6, DPM 7, Duo, Trio, Passport 2, Passport V, Spectrum, Spectrum OR, V12, V21, Accutorr 3, Accutorr 7, Passport 8, Passport 12, T1



Large Adult Long Single Patient Use Blood Pressure Cuff

0683-14-0007-01

Disposable NIBP Cuff, Adult Long, limb circumference: 33 to 47cm, quick connect, box of 10

Compatible with Accutorr V, DPM 3, DPM 4, DPM 5, DPM 6, DPM 7, Duo, Trio, Passport 2, Passport V, Spectrum, Spectrum OR, V12, V21, Accutorr 3, Accutorr 7, Passport 8, Passport 12, T1



Thigh Single Patient Use Blood Pressure Cuff

0683-14-0005-01

Disposable NIBP cuff, Thigh, limb circumference: 46 to 66cm, quick connect, box of 5

Compatible with Accutorr V, DPM 3, DPM 4, DPM 5, DPM 6, DPM 7, Duo, Trio, Passport 2, Passport V, Spectrum, Spectrum OR, V12, V21, Accutorr 3, Accutorr 7, Passport 8, Passport 12, T1



Recorder Paper - 12 rolls

0683-00-0505-02

Chart Paper for Recorder, 12 rolls

Compatible with Accutorr V, DPM 3, DPM 4, DPM 5, DPM 6, DPM 7, Passport V, Trio, Accutorr 7, Passport 8, Passport 12



Recorder Paper - 10 rolls

0683-00-0422-02

Chart Paper for Recorder, 10 rolls

Compatible with Passport 2, Spectrum, Spectrum OR, V12, V21

DPM SpO₂ – Cables



DPM SpO₂ Cable - 6 Pin

0010-20-42594

DPM SPO₂ Cable connects to DPM SPO₂ reusable and single patient use sensors, 6 pin

Compatible with Accutorr V, DPM 3, DPM 4, DPM 5, Passport V



DPM SpO₂ Cable - 7 Pin

0010-20-42710

DPM SPO₂ Cable connects to DPM SPO₂ reusable and single patient use sensors, 7 Pin

Compatible with DPM 6, DPM 7



DPM SpO₂ Extension Cable

0010-20-43075

DPM SPO₂ extension cable, DB9, 1.2 m

Compatible with DPM 1, DPM 2

DPM SpO₂ – Reusable



DPM SpO₂ 512E Adult Soft Sensor

512E-30-90390

DPM SPO₂ 512E Reusable Sensor, Adult Finger with soft cover

Compatible with Accutorr V, DPM 1, DPM 2, DPM 3, DPM 4, DPM 5, DPM 6, DPM 7, DPM CS, Passport V



DPM SpO₂ 512F Adult Sensor

512F-30-28263

DPM SpO₂ 512F Reusable Sensor, Adult, Finger

Compatible with Accutorr V, DPM 1, DPM 2, DPM 3, DPM 4, DPM 5, DPM 6, DPM 7, DPM CS, Passport V



DPM SpO₂ 512G Pediatric Soft Sensor

512G-30-90607

DPM SPO₂ 512G Reusable Sensor, Pediatric Finger with soft cover

Compatible with Accutorr V, DPM 1, DPM 2, DPM 3, DPM 4, DPM 5, DPM 6, DPM 7, DPM CS, Passport V



DPM SpO₂ 512H Pediatric Sensor 512H-30-79061

DPM SPO₂ 512H Reusable Sensor, Pediatric, Finger

Compatible with Accutorr V, DPM 1, DPM 2, DPM 3, DPM 4, DPM 5, DPM 6, DPM 7, DPM CS, Passport V



DPM SpO₂ 518B Multiple Site Sensor 518B-30-72107

DPM SPO₂ 518B Reusable Sensor, Neonatal, Foot (Adult/Pediatric, finger or toe)

Compatible with Accutorr V, DPM 1, DPM 2, DPM 3, DPM 4, DPM 5, DPM 6, DPM 7, Passport V



DPM SpO₂ Ear Sensor 0010-10-12392

Envitec DPM SPO₂, Adult Ear Sensor

Compatible with Accutorr V, DPM 1, DPM 2, DPM 3, DPM 4, DPM 5, DPM 6, DPM 7, Passport V

DPM SpO₂ – Single Patient Use Sensors



DPM SpO₂ 520P Pediatric Sensors 520P-30-64201

DPM SPO₂ 520P Single patient use sensor, Pediatric, 10 to 50kg, 20/box

Compatible with Accutorr V, DPM 1, DPM 2, DPM 3, DPM 4, DPM 5, DPM 6, DPM 7, DPM CS, Passport V



DPM SpO₂ 520A Adult Sensors 520A-30-64101

DPM SPO₂ 520A Single Patient Use sensor, Adult > 30kg, 20/box

Compatible with Accutorr V, DPM 1, DPM 2, DPM 3, DPM 4, DPM 5, DPM 6, DPM 7, DPM CS, Passport V



DPM SpO₂ 520I Infant Sensors 520I-30-64301

DPM SPO₂ 520I Single patient use sensor, Infant, 3 to 20kg, 20/box

Compatible with Accutorr V, DPM 1, DPM 2, DPM 3, DPM 4, DPM 5, DPM 6, DPM 7, Passport V



DPM SpO₂ 520N Neonatal Sensors

520N-30-64401

DPM SPO₂ 520N Single patient use sensor, Neonatal, <3kg, 20/box

Compatible with Accutorr V, DPM 1, DPM 2, DPM 3, DPM 4, DPM 5, DPM 6, DPM 7, Passport V

Mindray™ North America offers Masimo SET® LNCS®, Low Noise Cabled Sensors, where clinicians benefit from Masimo SET pulse oximetry performance in a sensor with an integral cable. Reusable SpO₂ sensors are available in pediatric and adult sizes. Available in all patient sizes from neonate to adult, LNCS single patient use adhesive sensors are easy to apply, provide durability and improve patient comfort. 100% Latex Free. In addition to LNCS, Masimo SET® LNOP® reusable sensors and single patient use sensors are also available.

Masimo LNCS® SpO₂ Cables



LNC-4 Masimo SpO₂ Cable 0012-00-1652

LNC-4, Masimo LNCS SpO₂ Patient Cable, 4' (1.2 m)

Compatible with Accutorr V, Duo, Trio, Passport 2, Passport V, Spectrum, Spectrum OR, V12, V21



LNC-10 Masimo SpO₂ Cable 0012-00-1599

LNC-10, Masimo LNCS SpO₂ Patient Cable, 10' (3.1 m)

Compatible with Accutorr V, Duo, Trio, Passport 2, Passport V, Spectrum, Spectrum OR, V12, V21



LNC-14 Masimo SpO₂ Cable 0012-00-1653

LNC-14, Masimo LNCS SpO₂ Patient Cable, 14' (4.3 m)

Compatible with Accutorr V, Duo, Trio, Passport 2, Passport V, Spectrum, Spectrum OR, V12, V21



LNCS® Masimo SpO₂ Cable - 6 Pin 115-023136-00

Masimo LNCS SpO₂ patient cable connects to Masimo LNCS sensors, 6 Pin

Compatible with DPM 3, DPM 4, DPM 5



LNCS® Masimo SpO₂ Cable - 7 Pin 115-023135-00

Masimo LNCS SpO₂ patient cable connects to Masimo LNCS sensors, 7 Pin

Compatible with DPM 6, DPM 7



LNCS® Masimo SpO₂ Cable - 8 Pin 115-020768-00

Masimo LNCS SpO₂ patient cable connects to Masimo LNCS sensors, 8 Pin

Compatible with DPM 6, DPM 7, Accutorr 3, Accutorr 7, Passport 8, Passport 12, T1



Masimo LNCS® SpO₂ Reusable Sensors



Masimo LNCS® SpO₂ Single Patient Adhesive Sensors



LNCS® to LNOP® Patient Cable Adapter

0012-00-1651

Masimo LNCS to LNOP Patient Cable Adapter allows the use of LNCS sensors with LNOP cable

Compatible with Accutorr V, Duo, Trio, Passport 2, Passport V, Spectrum, Spectrum OR, V12, V21

LNCS® DCI Adult Sensor

0600-00-0126

LNCS DCI Adult Reusable Finger Sensor, patient weight range > 30 kg

Compatible with Accutorr V, DPM 3, DPM 4, DPM 5, DPM 6, DPM 7, Duo, Trio, Passport 2, Passport V, Spectrum, Spectrum OR, V12, V21, Accutorr 3, Accutorr 7, Passport 8, Passport 12, T1

LNCS® DCIP Pediatric Sensor

0600-00-0127

LNCS DCIP Pediatric Reusable Finger Sensor, patient weight range 10 to 50 kg

Compatible with Accutorr V, DPM 3, DPM 4, DPM 5, DPM 6, DPM 7, Duo, Trio, Passport 2, Passport V, Spectrum, Spectrum OR, V12, V21, Accutorr 3, Accutorr 7, Passport 8, Passport 12, T1

LNCS® TC-I Ear Sensor

0600-00-0128

LNCS TC-I Tip Clip Reusable Ear Sensor, patient weight range > 30 kg

Compatible with Accutorr V, DPM 3, DPM 4, DPM 5, DPM 6, DPM 7, Duo, Trio, Passport 2, Passport V, Spectrum, Spectrum OR, V12, V21, Accutorr 3, Accutorr 7, Passport 8, Passport 12, T1

LNCS® Aadx Adult Sensors

0600-00-0121

LNCS Aadx - Adult Single Patient Adhesive Sensors, patient weight range > 30 kg (20/box)

Compatible with Accutorr V, DPM 3, DPM 4, DPM 5, DPM 6, DPM 7, Duo, Trio, Passport 2, Passport V, Spectrum, Spectrum OR, V12, V21, Accutorr 3, Accutorr 7, Passport 8, Passport 12, T1

LNCS® Inf Infant Sensors

0600-00-0158

LNCS Inf - Infant Single Patient Adhesive Sensors, patient weight range 3 to 20 kg (20/box)

Compatible with Accutorr V, DPM 3, DPM 4, DPM 5, DPM 6, DPM 7, Trio, Passport 2, Passport V, Spectrum, Spectrum OR, V12, V21, Accutorr 3, Accutorr 7, Passport 8, Passport 12, T1



LNCS® NEO Neonatal Sensors

0600-00-0157

LNCS NEO Neonatal single patient adhesive sensors - for patients more than 3 kg and less than 40 kgs (20/box)

Compatible with Accutorr V, DPM 3, DPM 4, DPM 5, DPM 6, DPM 7, Passport 2, Passport V, Spectrum, Spectrum OR, V12, V21, Accutorr 3, Accutorr 7, Passport 8, Passport 12, T1



LNCS® NeoPt Neonatal Preterm Sensors

0600-00-0156

LNCS NeoPt Neonatal preterm single patient adhesive sensors, patient weight range < 1 kg (20/box)

Compatible with Accutorr V, DPM 3, DPM 4, DPM 5, DPM 6, DPM 7, Passport 2, Passport V, Spectrum, Spectrum OR, V12, V21, Accutorr 3, Accutorr 7, Passport 8, Passport 12, T1



LNCS® Pdtx Pediatric Sensors

0600-00-0122

LNCS Pdtx- Pediatric Single Patient Adhesive Sensors, patient weight range 10 to 50 kg (20/box)

Compatible with Accutorr V, DPM 3, DPM 4, DPM 5, DPM 6, DPM 7, Duo, Trio, Passport 2, Passport V, Spectrum, Spectrum OR, V12, V21, Accutorr 3, Accutorr 7, Passport 8, Passport 12, T1

Masimo® SpO₂ – LNOP® Cables



LNOP® MAC-1 Adapter Cable

0012-00-1656

MAC-1 Adapter Cable1 allows the use of LNOP sensors with a Masimo LNC cable (1/box)

Compatible with Accutorr V, Duo, Trio, Passport 2, Passport V, Spectrum, Spectrum OR, V12, V21



LNOP® PC08 Masimo SpO₂ Cable

0012-00-1099-01

Masimo LNOP PC08 SpO₂ Cable, 8' (2.4 m)

Compatible with Accutorr V, Duo, Trio, Passport 2, Passport V, Spectrum, Spectrum OR, V12, V21



LNOP® PC12 Masimo SpO₂ Cable

0012-00-1099-02

Masimo LNOP PC12 SpO₂ Cable, 12' (3.7 m)

Compatible with Accutorr V, Duo, Trio, Passport 2, Passport V, Spectrum, Spectrum OR, V12, V21

*Masimo® SpO₂ – LNOP®
Reusable Sensors*



LNOP® DCI Adult Sensor

0600-00-0047

LNOP DCI-Adult Reusable Finger Sensor, patient weight range > 30 kg

Compatible with Accutorr V, Duo, Trio, Passport 2, Passport V, Spectrum, Spectrum OR, V12, V21



LNOP® DC-12 Adult Sensor

0600-00-0120

LNOP DC-12 Adult direct connect reusable finger sensor with attached 12 cable

Compatible with Accutorr V, Duo, Trio, Passport 2, Passport V, Spectrum, Spectrum OR, V12, V21



LNOP® DCIP Pediatric Sensor

0600-00-0063

LNOP DCIP-Pediatric/Slender Digit Reusable Finger Sensor, patient weight range 10 to 50 kg

Compatible with Accutorr V, Duo, Trio, Passport 2, Passport V, Spectrum, Spectrum OR, V12, V21



LNOP® TCI Ear Sensor

0600-00-0110

LNOP TC-I Reusable Tip-Clip Ear Sensor, patient weight range > 30 kg

Compatible with Accutorr V, Duo, Trio, Passport 2, Passport V, Spectrum, Spectrum OR, V12, V21



LNOP® YI Multisite Sensor

0600-00-0078

LNOP YI Multisite Reusable Sensor, patient weight range > 1 kg

Compatible with Accutorr V, Duo, Trio, Passport 2, Passport V, Spectrum, Spectrum OR, V12, V21

Masimo® SpO₂ – LNOP® Single Patient Adhesive Sensors



LNOP® Adt Adult Sensors

0600-00-0043-01

LNOP Adt-Adult Single Patient Adhesive Sensors, patient weight range > 30kg (20/Box)

Compatible with Accutorr V, Duo, Trio, Passport 2, Passport V, Spectrum, Spectrum OR, V12, V21



LNOP® Inf-L-Infant Sensors

0600-00-0100

LNOP Inf-L-Infant Single Patient Adhesive Sensors, patient weight range > 3 kg and < 10 kg (20/Box)

Compatible with Accutorr V, Trio, Passport 2, Passport V, Spectrum, Spectrum OR, V12, V21



LNOP® Neo-L Neonatal Sensors

0600-00-0099

LNOP Neo-L Neonatal Single Patient Adhesive Sensors, patient weight range > 1 kg and < 10 kg (20/Box)

Compatible with Accutorr V, Passport 2, Passport V, Spectrum, Spectrum OR, V12, V21



LNOP® NeoPt-L Preterm Neonatal Sensors

0600-00-0098

LNOP NeoPt-L-Preterm Neonatal Single Patient Adhesive Sensors, patient weight range < 1 kg (20/Box)

Compatible with Accutorr V, Passport 2, Passport V, Spectrum, Spectrum OR, V12, V21



LNOP® Pdt Pediatric Sensors

0600-00-0044-01

LNOP Pdt-Pediatric/Slender Digit Single Patient Sensors, patient weight range > 10 kg and < 50 kg (20/Box)

Compatible with Accutorr V, Duo, Trio, Passport 2, Passport V, Spectrum, Spectrum OR, V12, V21

*Masimo® SpO₂ –
Miscellaneous Accessories*



Masimo Multisite Foam Wrap

0600-00-0083

Masimo Multisite Foam Wrap for LNOP/LNCS YI Sensors (12/pkg)

Compatible with Accutorr V, Duo, Trio, Passport 2, Passport V, Spectrum, Spectrum OR, V12, V21



Masimo Standard Multisite Wraps

0600-00-0081

Masimo Standard Multisite Wrap. Adt/Ped/Neo adhesive wraps for YI Multisite sensors, (100/box)

Compatible with Accutorr V, Duo, Trio, Passport 2, Passport V, Spectrum, Spectrum OR, V12, V21



Neo-L Replacement Tapes

0600-00-0096

Adhesive tapes for Neonatal L single patient adhesive sensors(100/box)

Compatible with Accutorr V, Passport 2, Passport V, Spectrum, Spectrum OR, V12, V21

Nellcor™ SpO₂ Cables



Nellcor™ OxiMax™ SpO₂ Cable

0012-00-1464

Nellcor OxiMax DOC-10 SpO₂ Cable

Compatible with Accutorr V, Duo, Trio, Passport 2, Passport V, Spectrum, Spectrum OR, V12, V21



Nellcor™ OxiMax™ SpO₂ Cable - 6 Pin

0010-20-42595

Nellcor SpO₂ extension cable, 6 Pin

Compatible with DPM 4



Nellcor™ OxiMax™ SpO₂ Cable

0010-20-42712

Nellcor SpO₂ extension cable

Compatible with DPM 6, DPM 7, Accutorr 3, Accutorr 7, Passport 8, Passport 12, T1



Nellcor™ OxiSmart™ SpO₂ Cable

0012-00-1254

Nellcor OxiSmart SCP-10 sensor cable

Compatible with Trio, Passport 2, Spectrum

Nonin SpO₂ Accessories**Cleaning Plug**

0003-00-0055

SpO₂ Module Cleaning Plug

Compatible with Panorama Telepack

**Nonin SpO₂ Cable**

0012-00-1542-01

Reusable Nonin SpO₂ Cable for use with Nonin Single Patient Use Sensors

Compatible with Panorama Telepack

**Nonin SpO₂ Adult Sensor Kit**

0020-00-0167

Nonin SpO₂ Sensor Kit, AdultIncludes Nonin SpO₂ Cable, 2 Disposable Sensors, Adult Reusable SpO₂

Compatible with Panorama Telepack

**Nonin SpO₂ Single Patient Use Adult Sensors**

0600-00-0139-24

Adult Single Patient Use Nonin SpO₂ Sensor (24/pkg). Used with Nonin SpO₂ cable.

Compatible with Panorama Telepack

**Nonin SpO₂ Reusable Adult Sensor**

0600-00-0140-01

Adult Reusable Nonin SpO₂ Finger Sensor. Connects directly to the SpO₂ module.

Compatible with Panorama Telepack

Rolling Stands



Accutorr V Rolling Stand

ACTVROLLSTD

Value Rolling Stand with mounting bracket for the Accutorr V

Compatible with Accutorr V



Accutorr Vital Signs Rolling Stand

045-001057-00

Value Rolling Stand with quick release mount

Compatible with Accutorr 3, Accutorr 7



DPM 6 Rolling Stand

045-000915-00

DPM 6 Rolling stand with mounting bracket

Compatible with DPM 6



DPM 6 Rolling Stand & SMR Mount

0010-30-43049

DPM 6 Rolling stand with mounting bracket and SMR mount

Compatible with DPM 6



Duo Rolling Stand

DUOROLLSTD

Value Rolling Stand with Duo Mounting Bracket

Compatible with Duo



Passport 8 and T1 Rolling Stand

045-000924-00

Mindray Value Rolling Stand with quick release mount

Compatible with Passport 8, T1



Passport 12 Rolling Stand

121-001140-00

Mindray Transport Rolling Stand with quick release mount

Compatible with Passport 12



Passport V Transport Rolling Stand

PASSVROLLSTD

Transport Rolling Stand with stationary mounting plate and two baskets for additional storage

Compatible with Passport V



Passport V Transport Rolling Stand with Quick Release

PASSVROLLSTDQR

Transport Rolling Stand with quick release plate and two basket for additional storage

Compatible with Passport V



Transport Rolling Stand

TRANSLBRKT

Transport Rolling Stand with stationary mounting bracket and two baskets for storage

Compatible with Passport 2, Spectrum, Spectrum OR



Transport Rolling Stand with Quick Release

TRANSQRMTG

Transport Rolling Stand with quick release plate and two basket for additional storage

Compatible with Passport 2, Spectrum, Spectrum OR



Trio Rolling Stand

TRIOROLLSTD

Value Rolling Stand with Trio mounting bracket

Compatible with Trio



V-Series Rolling Stand

115-005392-00

V-Series Rolling Stand includes mounting brackets

Compatible with V12

Rolling Stand Parts



Accutorr V Rolling Stand Mount Kit

6101-30-46696

Mounting kit for Accutorr V to rolling stand Includes mounting head and mounting bracket

Compatible with Accutorr V



Accutorr V Mounting Bracket 6101-30-46669

Accutorr V mounting bracket for Value Rolling Stand

Compatible with Accutorr V



Accutorr V Mounting Head 115-002451-00

Mounting head for Accutorr V Rolling Stand.

Compatible with Accutorr V



Accutorr VS Series Quick Release 045-001054-00

Quick release mount for Accutorr VS

Compatible with Accutorr 3, Accutorr 7

Bin - Value Rolling Stand 115-004084-00

Value Rolling Stand Bin

Compatible with Accutorr V, Duo, Trio, Accutorr 3, Accutorr 7, T1



Caster Kit CASTERKIT

Value Rolling Stand, Set of 5 casters

Compatible with Accutorr V, Duo, Trio, Accutorr 3, Accutorr 7, T1



Duo Rolling Stand Mounting Bracket 115-003749-00

Mounting Bracket to mount the Duo to the Value Rolling Stand

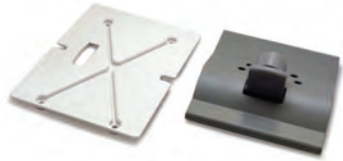
Compatible with Duo



Mounting Plate, Gas Module to Rolling Stand 0386-00-0232

Mounting Plate attaches the Gas Module to the Transport Rolling Stand

Compatible with Passport V



Trio Rolling Stand Mounting Bracket

115-003748-00

Trio Mounting Kit for Value Rolling Stand

Compatible with Trio

*Disposable Mindray™
Temperature Probes*



MR411 Esophageal / Rectal Disposable Temp Probe

0011-30-90446

Disposable temperature probe for Adult/Pediatric/Neonatal patients, measurement site: Esophageal/Rectal

Compatible with DPM 4, DPM 5, Passport V, DPM 6, DPM 7, Passport 8, Passport 12, T1



MR412 Disposable Skin Temp Probe

0011-30-90447

Disposable temperature probe for Adult/Pediatric/Neonatal patients, measurement site: Skin

Compatible with DPM 4, DPM 5, Passport V, DPM 6, DPM 7, Passport 8, Passport 12, T1

*Disposable Temperature
Probes – 400 Series*



ER 400-12 Esophageal/Rectal Disposable Temp Probe

0206-03-0212-02

Esophageal/Rectal, 400 Series Disposable Temperature Probe, 12 Fr. ER 400-12 (20/box)

Compatible with Trio, Passport 2, Passport V, Spectrum, Spectrum OR, V12, V21, DPM 6, DPM 7, Passport 8, Passport 12, T1



ER 400-9 Esophageal/Rectal Disposable Temp Probe

0206-03-0209-02

Esophageal/Rectal, 400 Series Disposable Temperature Probe, 9 Fr. ER 400-9 (20/box)

Compatible with Trio, Passport 2, Passport V, Spectrum, Spectrum OR, V12, V21, DPM 6, DPM 7, Passport 8, Passport 12, T1



ES 400-12 Esophageal Stethoscope Disposable Temp Probe

0206-03-0112-02

Esophageal Stethoscope, 400 Series Disposable Temperature Probe, 12 Fr. ES 400-12 (20/box)

Compatible with Trio, Passport 2, Passport V, Spectrum, Spectrum OR, V12, V21, DPM 6, DPM 7, Passport 8, Passport 12, T1



ES 400-18 Esophageal Stethoscope Disposable Temp Probe

0206-03-0118-02

Esophageal Stethoscope, 400 Series Disposable Temperature Probe, 18 Fr. ES 400-18 (20/box)

Compatible with Trio, Passport 2, Passport V, Spectrum, Spectrum OR, V12, V21, DPM6, DPM7, Passport 8, Passport 12, T1



SK 400 Skin Disposable Temp Probe

0206-03-0300-02

Skin, 400 Series Disposable Temperature Probe, SK 400 (20/box)

Compatible with Trio, Passport 2, Passport V, Spectrum, Spectrum OR, V12, V21, DPM 6, DPM 7, Passport 8, Passport 12, T1

Reusable 400 Series Temperature Probes



Adult Esophageal/Rectal Temp Probe

0206-02-0001

Esophageal/Rectal, 400 Series Reusable Temperature Probe, Adult

Compatible with Trio, Passport 2, Spectrum, Spectrum OR



Pediatric Esophageal/Rectal Temp Probe

0206-02-0002

Esophageal/Rectal, 400 Series Reusable Temperature Probe, Pediatric

Compatible with Trio, Passport 2, Spectrum, Spectrum OR



Skin Temperature Probe

0206-02-0003

Skin Surface, Reusable Temperature Probe, 400 Series

Compatible with Trio, Passport 2, Spectrum, Spectrum OR

Reusable Mindray™ Temperature Probes



MR Adult Esophageal/Rectal Temp Probe

040-000055-00

5 pin Temp probe, Adult Esophageal/Rectal; Connects direct to monitor

Compatible with Passport V, V12, V21



MR Adult Skin Temp Probe

040-000057-00

5 pin Temp probe, Adult skin; Connects direct to monitor

Compatible with Passport V, V12, V21



MR Pediatric Esophageal / Rectal Temp Probe 040-000056-00

5 pin Temp probe, Pediatric Esophageal/Rectal; Connects direct to monitor

Compatible with Passport V, V12, V21



MR Pediatric Skin Temp Probe 040-000058-00

5 pin Temp probe, Pediatric skin; Connects direct to monitor

Compatible with Passport V, V12, V21



MR401 Esophageal/Rectal Adult Reusable Temp Probe 0011-30-90440

MR401 reusable Temperature probe, Adult, Esophageal/Rectal, Audio; Connects direct to monitor

Compatible with DPM 4, DPM 5



MR401B Esophageal/Rectal Adult Reusable Temp Probe 0011-30-37392

MR401B reusable Temperature probe, Adult, Esophageal/Rectal, 2 Pin; Connects direct to monitor

Compatible with DPM 6, DPM 7, Passport 8, Passport 12, T1



MR402 Esophageal/Rectal Pediatric/Neonatal Reusable Temp Probe 0011-30-90441

MR402 reusable Temperature probe, Pediatric/Neonatal, Esophageal/Rectal, Audio; Connects direct to monitor

Compatible with DPM 4, DPM 5



MR402B Esophageal/Rectal Pediatric/Neonatal Reusable Temp Probe 0011-30-37394

MR402B reusable Temp probe, Pediatric/Neonatal, Esophageal/Rectal, 2 Pin; Connects direct to monitor

Compatible with DPM 6, DPM 7, Passport 8, Passport 12, T1



MR403 Adult Reusable Skin Temp Probe 0011-30-90442

MR403 reusable Temperature probe, Adult, Skin, Audio; Connects direct to monitor

Compatible with DPM 4, DPM 5



MR403B Adult Reusable Skin Temp Probe

0011-30-37393

MR403B reusable Temperature probe, Adult, Skin, 2 Pin;
Connects direct to monitor

Compatible with DPM 6, DPM 7, Passport 8, Passport 12, T1



MR404 Pediatric/Neonatal Reusable Skin Probe

0011-30-90443

MR404 reusable Temperature probe, Pediatric/Neonatal, Skin, Audio;
Connects direct to monitor

Compatible with DPM 4, DPM 5



MR404B Pediatric/Neonatal Reusable Skin Probe

0011-30-37395

MR404B reusable Temp probe, Pediatric/Neonatal, Skin, 2 Pin;
Connects direct to monitor

Compatible with DPM 6, DPM 7, Passport 8, Passport 12, T1

Reusable Temperature Cables



400 Series Reusable Temp Cable

0012-00-0975

Reusable Instrument Cable, 400 Series; For use with 400 series disposable
probes: Connects temperature probes to patient monitor

Compatible with Trio, Passport 2, Spectrum, Spectrum OR



400 Series Temperature Cable

040-000091-00

Reusable Instrument Cable, 400 Series; for use with 400 Series Disposable
Temperature Probes, connects temperature probes to patient monitor

Compatible with Passport V, V12, V21

Temperature Transition Cable for 400 Series Temp Probes

0010-30-43056

This cable allows the use of the 400 series disposable temperature probes. Connect the
transition cable to the module then connect the transition cable to the reusable temp cable,
0012-00-0975.

Compatible with DPM 6, DPM 7, Passport 8, Passport 12, T1



MR Temperature Cable

0011-30-37391

Temperature extension cable for use with Mindray™
disposable temperature probes

Compatible with DPM 6, DPM 7, Passport 8, Passport 12, T1



MR Temperature Cable 0011-30-90444

Temperature extension cable for use with Mindray™ disposable temperature probes

Compatible with DPM 4, DPM 5

SmarTemp



SmarTemp Oral Probe 801-6006-00009-00

Oral/Auxiliary probe for use with SmarTemp temperature module

Compatible with Accutorr V, DPM 3, Accutorr 3, Accutorr 7



SmarTemp Oral Probe Blue Sheath M09A-20-62062

Blue sheath for use with the SmarTemp Oral/Auxiliary probe

Compatible with Accutorr V, DPM 3, Accutorr 3, Accutorr 7



SmarTemp Probe Covers - 2000/case M09A-30-62128

Probe covers for use with SmarTemp temperature Probes: 2000 pcs/case (100 boxes, 20 pcs/box)

Compatible with Accutorr V, DPM 3, Accutorr 3, Accutorr 7



SmarTemp Probe Covers - Box of 20 M09A-20-62124

Probe covers for use with SmarTemp temperature probes, box of 20

Compatible with Accutorr V, DPM 3, Accutorr 3, Accutorr 7



SmarTemp Rectal Probe 6006-30-39599

Rectal probe for use with SmarTemp temperature module

Compatible with Accutorr V, DPM 3, Accutorr 3, Accutorr 7



SmarTemp Rectal Probe Sheath M09A-20-62062-51

Sheath for use with the SmarTemp Rectal probe

Compatible with Accutorr V, DPM 3, Accutorr 3, Accutorr 7

*Welch Allyn® SureTemp® Plus
Thermometer Module and
Accessories*



Welch Allyn® Sure Temp® Plus Probe Covers

0198-00-0044

Probe covers for the Welch Allyn® SureTemp Plus thermometer module, 1000/box

Compatible with Accutorr V, Duo, Accutorr 3, Accutorr 7



Accutorr 3 Welch Allyn® SureTemp® Plus Bracket

115-025042-00

Mounting bracket used to mount and lock the Welch Allyn® SureTemp Plus thermometer module to the side of the Accutorr 3

Compatible with Accutorr 3

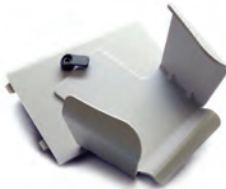


Accutorr 7 Welch Allyn® SureTemp® Plus Bracket

115-025041-00

Mounting bracket used to mount and lock the Welch Allyn® SureTemp Plus thermometer module to the side of the Accutorr 7

Compatible with Accutorr 7

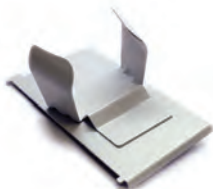


Welch Allyn® SureTemp® Plus Locking Bracket

6101-30-46633

Mounting bracket used to mount and lock the Welch Allyn® SureTemp Plus thermometer module to the side of the Accutorr V

Compatible with Accutorr V



Welch Allyn® SureTemp® Plus Non Locking Mount

0040-00-0405

SureTemp Plus non-locking mounting bracket mounts the Welch Allyn® SureTemp Plus thermometer module to the patient monitor

Compatible with Duo



Welch Allyn® SureTemp® Plus Oral Probe

0992-00-0213-02

Welch Allyn® SureTemp Plus oral probe cable and well, 9 foot

Compatible with Accutorr V, Duo, Accutorr 3, Accutorr 7



Welch Allyn® SureTemp® Plus Thermometer Module

0992-00-0198

Welch Allyn® SureTemp Plus Thermometer Module includes one 9' oral probe with oral probe well and a box of 25 probe covers

Compatible with Accutorr V, Duo, Accutorr 3, Accutorr 7

**Mindray provides
multi-modality solutions:**

- Medical imaging systems
- Patient monitoring, networking
and life support products
- *In-vitro* diagnostic products



Mindray North America
800 MacArthur Blvd.
Mahwah, NJ USA 07430
Tel: 800.288.2121 or 201.995.8000
Fax: 800.926.4275
www.mindray.com



Mindray® is a registered trademark of Shenzhen Mindray Bio-Medical Electronics Co., Ltd. All rights reserved.
All brands and product names are trademarks of their respective owners. Specifications subject to change without notice.
Contact your Mindray Representative for the most current information.
©2015 Mindray DS USA, Inc. Subject to change. 4/15 P/N: 0002-08-5639 Rev C

