

DP-10

Digital Ultrasonic Diagnostic Imaging System



Powerful B/W System with Full Screen

With the best-in-class combination of performance and ergonomic design, DP-10^{Power} edition is an ideal choice for B/W system. Excellent image quality and PW Doppler imaging with auto measurement meet the requirements of different applications, helping you to enhance your diagnostic confidence. High definition LED with full screen design of DP-10^{Power} edition provides you with new operation experience.

Exceptional Ergonomic Design

- 12.1 inch high definition LED
- Full Screen design for easy cleaning
- 30 degree tilting angle adjustable monitor
- Maximum 2 universal transducer connectors
- User friendly control panel with backlit
- Light and compact design for extreme portability

Streamlined Workflow

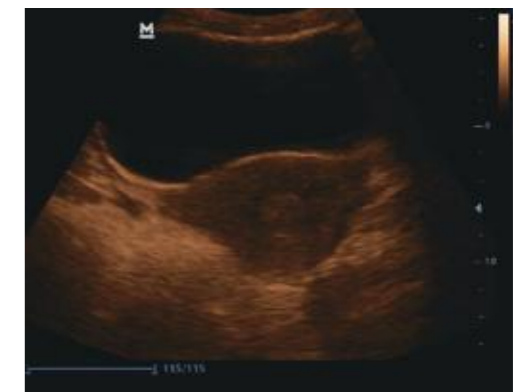
- iScanHelper offers ultrasound tutorial for your practice
- iStorage for instant images and reports transfer to PC
- iTouch for quick image optimization
- iZoom for instant full screen image zoom
- 1.5h uninterrupted scanning with rechargeable battery
- 500GB hard disk for large patient data storage

Enhanced Diagnostic Confidence

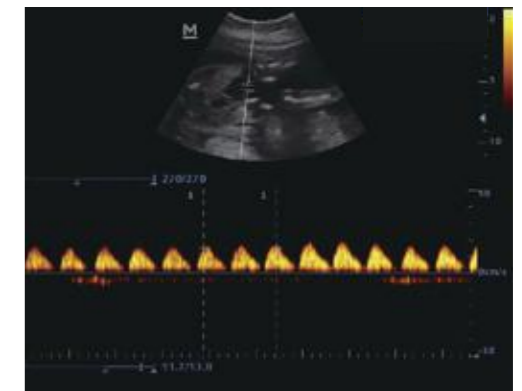
- PW Doppler and Auto Trace reveal details of blood flow for more comprehensive diagnosis
- Tissue Harmonic Imaging for enhanced contrast resolution
- iClear for Speckle Reduction Imaging, providing clear and sharp lesion contours
- IP (Image Processing) for fast image optimization
- 8-TGC assuring accurate image uniformity control



Liver



Uterus



PW Doppler image of umbilical cord



Thyroid